

NEWSLETTER



Swansfield Park Primary School, The Avenue, Alnwick, Northumberland NE66 1UL

APRIL 2019

As the weather warms up we are looking forward to the summer term and all the exciting learning opportunities that come at this time of year.

We have children out on residential visits experiencing independence, new challenges and diverse cultures – children usually return feeling a real sense of achievement. Other children will be taking part in a range of educational visits and sporting competitions. We will of course be making the most of our wonderful outdoor environment and the forest school activities on offer as well as getting ready for the Northumbria in Bloom judges. Read on to find out much more ...

Communications

We use many different ways to communicate with parents.



Keep up to date through the school website at:
www.swansfield.northumberland.sch.uk



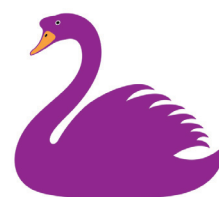
Email the office at:
admin@swansfield.northumberland.sch.uk



Check the text messages received from **Teachers2Parents** please ensure that the office have an up to date mobile number for you.



Read the **Head Teacher's weekly blog** posted on the website and on Facebook every Monday for the very latest news.



Swansfield Park
Primary School



A Message from our Friends

As we enter the final term of the school year we wanted to reflect and update you on the latest news.

Rachel, Kirsty and I took on our roles as committee members back in September 2017. Since then we have worked incredibly hard to host annual events and also to try out new fundraising ideas. **In almost 2 years in post, we are astounded to announce that we have raised around £8,500 to help pay for the 'added extras' in school.**

You will all no doubt be aware that we have funded most buses for school trips, the Christmas lunches in school and the production company to come in with a pantomime performance. We bought the school choir their very smart uniforms and bought the Year 6 leavers each a personalised scientific calculator. We have also contributed funds for the sensory area within the studio, bought an 'Academy card' so the school can access Alnwick Gardens without parents having to pay extra and paid for a company to come into school with their collection of mini-beasts to show the children.

With all of this, and the money we have set aside to fund some outdoor seating and digging areas, we feel that we have managed to enrich the pupils' experiences at school.

We are extremely proud of our achievements and it is the result of excellent teamwork that we have managed to do so well. We are a small committee and we, like many of you, juggle our work with raising families *and so we have decided that it is time for us to step down and resign our posts, so that a new committee may form and work as a team to achieve great things next year.*

We couldn't leave without thanking everyone who has supported us in our mission to raise the funds for school. We feel that a special mention must

be given to the band of loyal helpers who continue to turn out event after event to help us, without whom we simply wouldn't be able to run. **Lindsay & Chris Black, Jane & Dave Belshaw, Nichola Howarth, Shelly Hunt, Ruth Allan, Rachael Goodfellow, Amy Herbst, Sherrie Williamson and Paula Pentleton** are just a few who we have come to rely on. **Our sincere thanks and appreciation go to them, and to all the staff and families who support us in what we do.**

As this committee steps down we wholeheartedly ask each of you to consider getting involved in the **Friends of Swansfield Park**. Getting involved needn't mean becoming a committee member (although there are now some vacancies!), it may just mean expressing an interest in helping at one event, baking cakes for the next coffee morning, selling raffle tickets at the Christmas performances.

We have an email account, a Facebook page and more recently we started a What's app group for people who are keen to find out what events we are planning and when we need helpers. The Friends is not an exclusive group. We welcome new faces to every event and the more people that get involved, the lighter the work is for everyone. **In a school of over 350 pupils, where every child benefits from the money we raise, we ask that you think about how you could get involved or support us.**

There will be an AGM in early September where the new committee will be elected.

If you have any interest in joining or hearing about the good work that the Friends do please get in touch with either Mrs Smith, the office, or us directly on **friendsofswansfield@gmail.com**

Kind Regards

Helen Bridges

SUN SAFETY



Please remember to put sun cream on your child before school and send in a water bottle and a sun hat.

Thank you.



Swansfield goes nut free

We have children in school with severe nut allergies. These allergies are serious and cause a rapid and life threatening reaction known as anaphylaxis. Please be mindful of this if you are preparing packed lunches for your child and please avoid including any nut products. Our school kitchen doesn't use nuts in the preparation of meals. We have reviewed our food and packed lunch policies and reissued our packed lunch information leaflet.



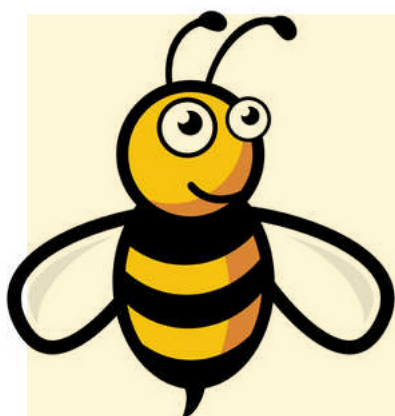
Outdoor Learning in our Forest School

Forest School promotes the holistic development of all those involved by fostering resilience, confidence, independence and creativity in a natural outdoor environment.

Forest School offers all learners the opportunity to take supported risks appropriate to the environment and to themselves. During Forest School we talk about the nature around us and our responsibility to care for it. We have lots of fun at Forest School, we play games, we problem solve, we do team building activities, we get creative with natural resources and each child has the ability to develop their own interests in an outdoor environment.

Here at Swansfield Park Primary aspects of Forest School are available to every child at play times and lunchtimes. We have a huge collection of branches, logs and sticks to enable the children to build dens. When a child builds a den they are often not even aware that they are planning, estimating, calculating, problem solving, predicting, risk taking, being creative, using their gross and fine motor skills, evaluating and last but not least their self-esteem and confidence is developing during the process.

We have just planted a pear tree and a plum tree - now we have a tree for every class!



Bee Friendly

Following our success last year in the Northumbria in Bloom competition and the conservation theme that is on-going in school we are focusing our family learning on being "Bee Friendly".

We would like children to grow bee friendly plants which we can plant in our class gardens and also find out why bees are so important to us. Children can make posters, write a report or do a project about bees for a display to show the Northumbria in Bloom judges.

Please can you send all plants and work in by Friday 7th June.

DIARY DATES

Spring Term Awards

The Sylvia Elliott Progress Cup:
James Lamb

Gold Certificates:

**Edward Blyth, MJ Pringle,
Lexi Hardman, Archie
McEwan, Lee Melech,
Max Johnson, Archie Nelms,
Ryley Campbell, Lucas
Anderson, Liam McDonogh
and Archie Muers**



**Lucas Anderson, Coburn
Skene, Sarah Hopper, Kamil
Jankowski, Thea Harris and
Charley Mitchell**

YEAR 6 SATS TIMETABLE

MONDAY 13TH MAY	Spelling, Grammar and Punctuation
TUESDAY 14TH MAY	Reading
WEDNESDAY 15TH MAY	Maths – Paper 1 (Arithmetic) Maths – Paper 2 (Reasoning)
THURSDAY 16TH MAY	Maths – Paper 3 (Reasoning)

THURSDAY 25TH APRIL

Rowan Class
Friends & Family Lunch

MONDAY 29TH APRIL

Class Photographs

WEDNESDAY 8TH MAY

Chestnut Class
Friends & Family Lunch

THURSDAY 9TH MAY

Willow Class Assembly – 2.30pm

SATURDAY 18TH MAY

Choir Performance –
4pm at St Paul's Church

MONDAY 20TH MAY

Year 6 Residential

WEDNESDAY 22TH MAY

Willow Class
Friends & Family Lunch

WEDNESDAY 22TH MAY

Mini medics – year 5

FRIDAY 24TH MAY

School closes
HALF TERM HOLIDAY

MONDAY 3RD JUNE

School reopens

WEDNESDAY 5TH JUNE

Beech Class
Friends and Family Lunch

THURSDAY 6TH JUNE

Countryside Day - Year 3

THURSDAY 13TH JUNE

Plum Class Assembly 2:30pm

WEDNESDAY 19TH JUNE

Ford Castle – Year 4

WEDNESDAY 19TH JUNE

Ash Class
Friends and Family Lunch

THURSDAY 20TH JUNE

Beech Class Assembly
2:30pm

TUESDAY 25TH JUNE

Musical Roots Day
at Alnwick Garden

WEDNESDAY 26TH JUNE

Infant Sports Day

FRIDAY 28TH JUNE

Junior Sports Day

WEDNESDAY 3RD JULY

Plum Class
Friends & Family Lunch

THURSDAY 4TH JULY

Roll Up Day

SATURDAY 13TH JULY

Summer Fair

TUESDAY 16TH JULY

Swansfield Celebrates

FRIDAY 19TH JULY

Leaver's Lunch – 11.45am
Leaver's Assembly – 2pm

School Closes

SUMMER HOLIDAY

WEDNESDAY 4TH SEPTEMBER

School reopens for the AUTUMN
TERM

Choir Performance

On the **18th May at 4.00pm in St Paul's Church**, Swansfield Park Primary school choir will be joining the choir from St Paul's Primary school and the Bailiffgate Singers to perform a concert in aid of Contagious schools and youth work.

This concert will be a great community event and it would be lovely to see lots of families coming along. A family ticket (2 adults and up to 3 children) is £10, an adult ticket is £5 and a young person's ticket (14-18) is £2.50.

Tickets are available to buy on the door or from Claire Mead by calling 07525748728.