

# Swansfield Park Primary School

# NEWSLETTER

Swansfield Park Primary School, The Avenue, Alnwick, Northumberland NE66 1UL

[www.facebook.com/swansfieldpark](http://www.facebook.com/swansfieldpark)



SEPTEMBER 2019

Welcome back to the start of a new academic year at Swansfield Park Primary School. The school is very full and oversubscribed in most year groups. There is a vibrancy throughout the school which creates a very positive learning environment and enthuses children to learn.

Congratulations to Will Wilson and Jessica Lee who are our new Head Boy and Head Girl.

Each Castle have a male and female Castle Captain, these are:

## ALNWICK

Finlay Allan and Lyla Beevers

## WARKWORTH

Dougie Lang and Eairan Horne Smith

## BAMBURGH

Charlie Muers and Melody Robinson

## DUNSTANBURGH

Taylor Coxford and Elise Lawson

We are sure that these young people will be superb ambassadors for our school and act as excellent role models for others to aspire to.

PICTURE OVERLEAF!

At the beginning of each school year we reflect back on the previous year which thankfully was a much calmer year than the previous one and now we feel that we are a truly well-established primary school. Please read on to see our successes, it is really pleasing to continue to achieve such good outcomes for our children both in and out of the classroom.

Thanks to the Friends, particularly **Helen Bridges, Kirsty Isats** and **Rachel Slater**, who have continued with their sterling work by organising some great events and raising sufficient money to pay for the transport for all trips, leavers' gifts, the christmas lunch and panto as well as buying some fantastic outdoor furniture. **We will be holding the AGM on Wednesday 25th September**, please come along and enjoy the cheese and wine and support us to establish a new committee with fresh ideas and willing helpers.

By continuing to work together, we can help our children to achieve outstanding results. All parents can listen to their child read, help them to learn their spelling or times tables, support them with their homework or family learning task.

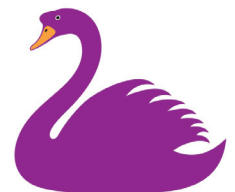
Most importantly please get your child to school every day on time (unless they are unwell), rested and raring to go. If you need any support, please ask either your child's class teacher or make an appointment at the office to see me.

If you have a bit more time you can volunteer as a friend or a classroom helper -please ask for further information.

We look forward to seeing you at our events this term.

Best Wishes

Jenny Smith



Swansfield Park  
Primary School





Congratulations to our new **Head Boy** and **Head Girl**, and our new **Castle Captains!**

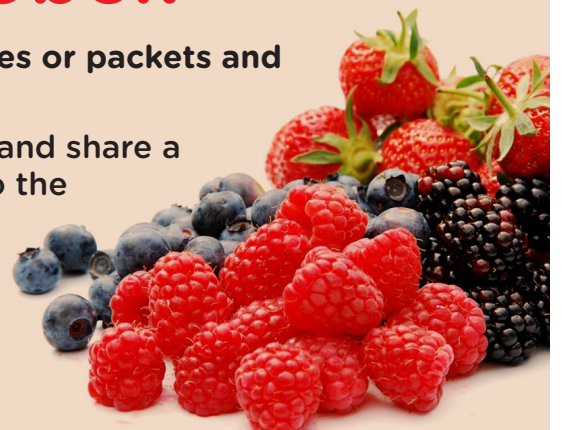
# Harvest Festival

We will be celebrating our Harvest Festival on  
**Wednesday 16th October.**

Please bring your donations; fresh fruit and vegetables or packets and canned food on that morning.

We will distribute your gifts to the elderly in Alnwick and share a harvest lunch with them. Surplus food will be given to the Alnwick Food Bank.

If you have an elderly relative or neighbour living in Alnwick who would appreciate a harvest parcel or an invitation to lunch on Friday 18th October, please let the school office know by October 11th.





# Family Learning

Our theme for family learning is  
**Harvest**

and we would like to create a display or incorporate work from the family learning projects in our harvest festival.

You can take photographs, paint a picture, write a poem or a song even have a go at preserving some of the harvest – bring in your own jar of jam or chutney!

Please have your contributions into school by **Monday 14th October** so we can display all the work to brighten up our harvest festival.



WE HAVE A  
**UK PARLIAMENT**  
TEACHER  
AMBASSADOR

**Well done Miss Back.** Last year we enjoyed learning about parliament and taking part in elections for our new Head Boy and Head Girl. We are looking forward to taking part in the pupil parliament alongside other local schools in the Alnwick Partnership.

## OPERATION ENCOMPASS

THE NEXT STEPS

We have sent a separate letter explaining about the Operation Encompass project. This term Laura Miller will be leading two sessions in different year groups, the first will be on September 24th and will focus on friendships and relationships and the next session on November 19th will be looking at emotions and feelings.

There will also be a drop in session in the meeting room between 2:45 and 3:30pm on both of these days for parents and children.

# Stars of the Week

Well done to our stars of the week for last half term. These children were chosen for working towards the 5 R's: being

**responsible**  
**reflective**  
**ready**  
**resourceful**  
and  
**resilient.**

They were: **Ollie Findler, Taylor Coxford, Emily Charlton, Matilda Nelms, Ava Murdy, Maisie Butroid** and **Isaac Kearns.**

## Gold Certificates

**Lola Anderson, Sophie Colgan McKnight, Jack Frater, Zach Harris, Emily Davison, William Holland, Liam Hegney, Cameron Jackson, Connor Bowie, Lyla Beevers** and **Lola Campbell.**



## Progress Cup

**Isaac Kearns**





**We are delighted that the Pearl of Africa choir from Uganda will be spending a day with us at Swansfield on Thursday 19th September. This will be the third time that we have been lucky enough to welcome these talented young people and we're looking forward to seeing old friends again and making new ones!**

There will be a whole school concert in the morning followed by some drumming and singing workshops.

All children will have the opportunity to visit the pop up craft stall that the choir bring with them. We invite children to bring between £1-£5 to spend on the day if they would like to.

In the afternoon, we will be welcoming children from schools across the Alnwick Partnership to take part in a special workshop in preparation for the evening concert at St Paul's Church at 6.30pm. Children from our school choir will be

involved in this and will be performing in the evening concert.

A letter for choir members will follow soon! Everyone is welcome to the evening concert and tickets will be available from the school office from Friday 6th September, priced at £4 for adults and £2 for children. Children singing with choir do not need to purchase a ticket.

If you would like to find out more about the Pearl of Africa Choir then you can visit the Molly and Paul Foundation Child Care website at <http://www.mollyandpaul.org/choir.html>

**As always, this will be a really special and memorable day for all of our children!**



**What a successful sporting year at Swansfield! Children from across the school have been actively involved in sports; whether it be in their PE lessons, at break times, at clubs after school or by representing the school at competitions.**



We sent a total of twelve teams out to sports competitions last academic year (over 150 children). Competitions included football, rugby, tennis, hockey and golf and we hope to send even more teams out this year. Three of our teams (year 3 and 4 athletics, year 5 and 6 athletics and year 6 girls football) qualified for the School Games County Festival which was held in Cramlington in June to compete against the rest of the Northumberland schools. Despite tough competition and scorching weather conditions, our girls football team finished in a respectable fourth place, with our athletics teams coming in fifth position – very well done to them!

Our involvement in these competitions helped contribute to us being awarded a Silver School Games Mark, which is an excellent achievement.

**A big thank you to Miss Moffet for all her hard work last year organising so many sporting events including two super sports days.**





# Didn't we do well!

We are working hard to get our 2018 - 19 performance data on to the website but here are the headlines. We have compared our results to last year's national averages as this year's national results are not yet available.

At the end of Early Years (reception) we assess pupils to see if they have achieved a good level of development. You can see that we continue to outperform the national average and 18% of our children achieved beyond the expected standard in all areas.

National	Swansfield Park
<b>70%</b>	<b>79%</b>

Our year 1 children did amazingly well and 94% achieved the phonics check compared to a national pass rate of 81% in 2018.

In year 2 our children completed their key stage 1 SATs and exceeded the 2018 national averages in all areas.

	Reading		Writing		Maths	
	EXPECTED	BEYOND	EXPECTED	BEYOND	EXPECTED	BEYOND
National 2018	<b>75%</b>	<b>26%</b>	<b>70%</b>	<b>16%</b>	<b>76%</b>	<b>22%</b>
Swansfield Park	<b>82%</b>	<b>32%</b>	<b>80%</b>	<b>21%</b>	<b>84%</b>	<b>23%</b>

The Year 6 results were also above the 2018 national results across the board.

	Reading		Writing		Maths	
	EXPECTED	BEYOND	EXPECTED	BEYOND	EXPECTED	BEYOND
National 2018	<b>75%</b>	<b>28%</b>	<b>78%</b>	<b>20%</b>	<b>76%</b>	<b>24%</b>
Swansfield Park	<b>85%</b>	<b>22%</b>	<b>89%</b>	<b>35%</b>	<b>96%</b>	<b>41%</b>

Yet again we are very pleased with these outcomes but in true Swansfield style 2019-20 is a new year so it's business as usual - onwards and upwards!





# Healthy School

**As we work to maintain our Healthy School status please help us to keep our children healthy and safe by...**

- **Encouraging children to drink water.** Please do not put juice or flavoured water into water bottles.
- **Remembering to keep your child at home for 48 hours following sickness.**
- **Removing jewellery (except watches) in school.** Children will be asked to remove earrings and nail varnish for health and safety reasons.
- **Keeping dogs off the school site.** Many children are frightened and dog fouling is a health risk.
- **Walking to school or parking responsibly in the playground car park or on Prudhoe Street.** Please remember that the staff car park is strictly out of bounds at all times.
- **Respecting our neighbours.** Please don't access the school site via the Police Station Houses.
- **Keeping the gates closed to ensure that the site is safe at all times.**
- **Remembering that children will be learning in the outdoor environment -** so please ensure that they have warm and waterproof clothing.
- **Supervising your children in the yard before school** and remember that football is not allowed at this time of day.
- **Encouraging your child to eat school dinners or providing a healthy packed lunch in line with current nutritional guidelines.**

---

**All adults who walk unaccompanied through the school building must have a DBS clearance and have signed in at the office.**

**Please do not wander through the school building in the mornings, if you need help go to the school office through the main entrance.**

**Please do not use mobile phones on the school site.**

**Remember that children must be supervised by school staff when on the climbing equipment.**

---



## Communications

We use many different ways to communicate with parents.



Keep up to date through the school website at:

**www.swansfield.northumberland.sch.uk**



Email the office at:

**admin@swansfield.northumberland.sch.uk**



Check the text messages received from

**Teachers2Parents**

- please ensure that the office have an up to date mobile number for you.



Read the

**Head Teacher's weekly blog**

posted on the website and on Facebook every Monday for the very latest news.

# DIARY DATES

**Thursday 12th September** Rowan Class Family Lunch 11.45am

**Wednesday 18th September** Individual Photographs

**Tuesday 24th September** Operation Encompass drop in 2:45pm

**Wednesday 25th September** Friends AGM 7pm

**Thursday 26th September** Larch Class Family Lunch 11.45am

**Thursday 26th September** Year 4 Residential Meeting 3.15pm

**Thursday 3rd October** Maple Class Assembly 2:30pm

**Wednesday 9th October** Sycamore Class Family Lunch 11.45am

**Wednesday 16th October** Harvest Festival - Infants at 10 am / Juniors at 2pm

**Wednesday 23rd October** Maple Class Family Lunch 11.45am

**Friday 25th October** School closes HALF TERM HOLIDAY

**Tuesday 5th November** School reopens

**Wednesday 6th November** Chestnut Class Family Lunch 11.45am

**Tuesday 12th November** Junior Mentoring Meetings 8.30 - 12.noon

**Wednesday 13th November** Infant and Junior Mentoring Meetings 1.00 - 6.30pm

**Wednesday 13th November** Early Years Parent Consultations 1.00 - 6.30pm

**Thursday 14th November** Infant Mentoring Meetings 8.30 - 12.noon

**Tuesday 19th November** Operation Encompass drop in 2:45pm

**Wednesday 20th November** Willow Class Family Lunch 11.45am

**Thursday 21st November** Larch Class Assembly 2:30pm

**Tuesday 3rd December** PANTOMIME

**Wednesday 4th December** Beech Class Family Lunch 11.45am

**Tuesday 10th December** Infant Christmas Concert - 1.45pm

**Wednesday 11th December** Infant Christmas Concert - 10am

**Wednesday 11th December** Years 3 & 4 Christmas Concert - 1.45pm

**Thursday 12th December** Years 3 & 4 Christmas Concert - 6pm

**Wednesday 18th December** Christmas Lunch and Parties

**Thursday 19th December** Christingle 1:45pm

**Friday 20th December** Christmas Jumper Day,  
School Closes CHRISTMAS HOLIDAY

**Monday 6th January** School reopens