

NEWSLETTER



Swansfield Park Primary School, The Avenue, Alnwick,
Northumberland NE66 1UL

APRIL 2018

**Welcome back to
the Summer Term.
I hope everyone is
looking forward
to some better
weather and making
the most of our
wonderful outdoor
environment.**

This term we have to assess all the children. Those in years 2 and 6 will have their SATs while children in years 3, 4 and 5 do similar assessments; the year 1 children will do the national phonics screen and our reception children will be assessed against the Early Years Profile. It is therefore very important to be at school as much as possible this term.

It is really important to maintain our high standards; new parents often choose a school following just one visit and first impressions count. Inevitably as we approach the end of the year uniform gets misplaced or outgrown and often the uniform policy is forgotten. Remember that our summer dresses are lilac or purple; PE kits are needed in school every day and it is recommended that long hair is tied back with plain bobbles and hairbands (in school colours please). For safety reasons earrings are not to be worn in school.

The sun can be very hot so please remember to apply sun cream to your child and encourage them to wear their sun hats at playtime.

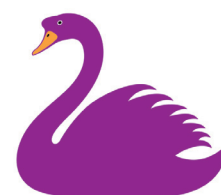
There are so many exciting activities planned for this term; residential visits, trips, theatre visits, arts projects, dancing, sports coaching and competitions. Please read the diary section and check the weekly blog to keep up to date.

*We look forward to seeing
you at our events this term.*

Best Wishes
Jenny Smith



A few weeks ago I was approached by the Alnwick in Bloom Committee who were keen to enter our school in the Northumberland in Bloom competition. After some serious consideration we agreed to participate and the judges will be coming in to school in July. I'm relying on everyone to support this project but after the amazing success of last year's Summer Showcase I am sure that we can create a spectacular impression. Read inside to find out how...



**Swansfield Park
Primary School**





Let's explore!

Well done to our thirteen Year 4 children who have achieved their Arts Explore certificates.

The thirteen children involved – **Melody, Jake, Lucas, Ellie S, Tom, Lyla, Sophie, Maisie, Matthew, Ava, Niall, Ellie R and Liam** – began their journey towards their **Arts Explore certificates** back in the spring term of last year.

The children were led through a **World War project** by **Emma Dunn, Helen Ellis and Caroline Fentiman**, where the children made connections and friendships across the generations with the residents of **Abbeyfields Care Home**. Week after week, the children's excitement grew in anticipation of their Wednesday afternoon visits, where they participated in singing, dancing, games and craft experience.

The group also took part in art based activities within school, where they explored and researched the work of **Quentin Blake** and **E H Shepherd**. They went on to illustrate their own book

covers, showing a clear line of inspiration from their research and showcased a final project performance at Alnwick Playhouse to family and friends, where the residents of Abbeyfields Care Home also attended.

The children recorded all their experiences, thoughts, ideas, achievements and progress in an **Arts Award Explore Log Book**. Three of the children were recently asked to represent the group and attend a moderation at the Duchess's High School, where they had a conversation with a moderator about the 'art journey' they had been through. Following this moderation, **we are very proud to announce that all thirteen children achieved the Arts Award Explore certificate**, which is an Entry Level 3 Award in the Arts especially from Trinity College, London. These certificates will be a super start to the children's educational portfolios in the future and they should all be very proud of the hard work and effort which went into achieving the certificate.

A big well done to you all!

Facilities Update

Over the holiday the **kitchen ventilation system** has been renewed. There have been one or two unforeseen complications but hopefully the work is back on schedule and we'll resume our normal meal service on Monday 23rd April.

The new summer menu is attached and also available on the website.

Following lengthy negotiations with the County Council we are finalising arrangements to **use the Lindisfarne playing field, gym and changing rooms on Tuesday and Friday afternoons**. This includes time after school for football training and matches. As well as a football pitch, a 400m running track will be marked out and **the field will also be used for our junior sports day on Friday 29th June.**

High School Transition

Later this term our Year 6 children will be **visiting The Duchess's High School on their transition day**. However we are also liaising with the High School to ensure that the children have many more opportunities to get to know the staff, pupils and the building before they move in September.

We are **working with the Science Department on a Polar Explorer transition project** and the **Design Technology Department** has invited all of the children to attend a **computer programming workshop** entitled *"What a disaster! Robots to the rescue!"*

High School staff will be visiting Swansfield to meet our children and we are hoping to arrange a drama workshop with the cast of "We Will Rock You."

Parent Governor

We have a vacancy for a **parent governor**. Governors play a very important role within our school community and we need someone with enthusiasm and commitment to join our supportive and hardworking team. If you are interested and would like further details please speak to me or contact **Bill Grisdale, Chair of Governors** via the school office. Nominations to be received by 27th April.

YEAR 6 SATS TIMETABLE

Monday 14th May	Spelling, Grammar and Punctuation
Tuesday 15th May	Reading
Wednesday 16th May	Maths - Paper 1 (Arithmetic)
	- Paper 2 (Reasoning)
Thursday 17th May	Maths - Paper 3 (Reasoning)

Summer Showcase

12th-13th July
2018



Last year we were overwhelmed with the marvellous response to our first summer showcase so much so that it is going to become an annual event in our school calendar.

We've been thinking creatively to link up several ongoing projects. The visit of the Northumberland in Bloom judges is scheduled for the 13th July and the older children will be studying World War 2 this term and exploring the Dig for Victory campaign. Therefore the theme of this year's showcase will be

"In our Gardens".

There will be lots of categories which we'll let you know about later in the term - however the family learning task will need you to get your gardening gloves on soon.



Family Learning

For our family learning activity we would like you to **grow a container** which could be a tub, hanging basket, wellie boot, teapot, old bucket or anything else you can think of.

These must contain at least one edible plant such as strawberries, tomatoes, courgettes, beans, chives, lettuce, nasturtiums or chard.

For more ideas google **Incredible Edibles** or visit the Roots and Shoots project at The Alnwick Garden.



Please bring all entries into school by Monday 9th July.



SUMMER TERM 2018

www.facebook.com/swansfieldpark



DIARY DATES

Communications

We use many different ways to communicate with parents.



Keep up to date through the school website at:

www.swansfield.northumberland.sch.uk



Email the office at:

admin@swansfield.northumberland.sch.uk



Check the text messages received from

Teachers2Parents

- please ensure that the office have an up to date mobile number for you.



Read the

Head Teacher's weekly blog

posted on the website and on Facebook every Monday for the very latest news.

Thursday 26th April	Year 6 Residential Briefing at 4pm
Thursday 26th April	Willow Class Assembly
Wednesday 2nd May	Oak Friends and Family Lunch
Thursday 3rd May	Ford Castle Briefing at 3.15pm
Wednesday 9th May	Chestnut Friends and Family Lunch
Wednesday 16th May	Pear Friends and Family Lunch
Wednesday 23rd May	Matilda - Year 5 and 6
Friday 25th May	School closes HALF TERM HOLIDAY
Monday 4th June	School reopens Year 6 Residential
Wednesday 6th June	Maple Friends and Family Lunch
Thursday 7th June	Countryside Day – Year 3
Thursday 14th June	Pear Class Assembly
Wednesday 20th June	Ford Castle - Year 4
Wednesday 20th June	Ash Friends and Family Lunch
Thursday 21st June	Beech Class Assembly
Wednesday 27th June	Infant Sports Day
Friday 29th June	Junior Sports Day
Wednesday 4th July	Beech Friends and Family Lunch
Thursday 5th July	Roll Up Day
Friday 20th July	Leavers' Lunch - 11.45am Leavers' Assembly - 2pm School Closes SUMMER HOLIDAY
Wednesday 5th September	School reopens for the AUTUMN term

Spring Term Awards

The Sylvia Elliott Progress Cup: **Evie Campbell.**

Gold Certificates: **Abi Oliver, Kamil Jankowski, Sophia Eddy, Sofia Bonnett, Rupert Georgiou-Williamson, Abigail Hardy, Lacey Coxford, Thea Harris, Estie Belshaw, Louise Syers, Kuba Melech, Megan Eaton and Daisy Tulloch.**



Stars of the Week

Lee Melech, Grace Bell, Florence Smith and Ollie Bell