

NEWSLETTER



Swansfield Park Primary School, The Avenue, Alnwick, Northumberland NE66 1UL

JUNE 2021

The start of this half term, June 7th to be precise, marks the beginning of my 29th year at this school and all but the first term as Head Teacher.

It has been the most wonderful privilege however the last year with its many challenges has also prompted me to think about what is important in my own life and with this in mind I have asked the Governing Body to reduce my working commitment.

From September I shall be working three days a week, with Mrs Grimes covering the headship on a Monday and Friday.

I believe that this arrangement will bring a new dimension to the role as we will have "Head Space" on a Tuesday, a time of shared leadership which will reinvigorate us to translate our vision and dreams into an excellent educational experience for your children.



There is a feeling of hope and expectation around at the moment which has been missing for some time. We are daring to plan and have some exciting projects and activities in the offing.

Last year we couldn't begin to contemplate sports days. However this year we have asked our sports coaches to lead a **sports competition** in each phase which will culminate in the presentation of the Castle Cup. Our tentative dates are included in the diary section of this letter. At present these events will be for children only and, as the Lindisfarne field is unavailable, they will be held on site.

The Summer Term wouldn't feel complete

without a chance to get out and about – children in years 5 and 6 are off to **Broomley Grange** to experience some adventurous activities. **Willow, Chestnut and Maple** classes will each spend a day being **Clarty Commandos** in **Howick Woods** while the key stage 1 children will be spending a day beside the seaside with the **Mudlarks**.

Our Reception children will get out and about in our town later in the half term and there'll be a treasure hunt to follow and a picnic in the park.

Further details of dates and activities will follow from class teachers.

Swansfield Park Primary School, The Avenue, Alnwick,
Northumberland NE66 1UL

Telephone: 01665 602267 or 01665 603413

More on our website: www.swansfield.northumberland.sch.uk



Bikeability

Bikeability is back for both year 5 and year 6.
Here is an outline of the courses:

LEVELS 1 & 2:

On this course the children will learn how to:

Cycle safely and responsibly

Identify and respond to hazards

Start and stop on-road journeys

Maintain suitable riding positions

Share the road with others and communicate with other road users

Comply with signals, signs and road markings

Manage risk when cycling

Negotiate junctions (pass side roads, turn at T junctions, and crossroads and roundabouts if present).

LEVEL 3:

This course is aimed at year 6

On this course the children will learn how to:

Plan a journey

Plan to and ride assertively everywhere cycling is permitted

Maintain suitable riding positions

Cooperate with and respect other road users

Pass queuing traffic and use junctions controlled by traffic lights

Use cycle infrastructure and multi-lane roads

The main difference is that **Level 2** is designed and delivered to allow the riders to know what to do, where to do it, when to do it and “why”. allowing them to make the right choices when out riding their bikes, walking or scooting.

Level 3 is the advanced option where we work with the riders on the more complex areas of road safety, risk management and decision making.



You are what you eat!

We have had a look at the school meal menu and given it a bit of a refresh.

Each day of the week will have a theme – **Meat Free Monday, Great British Tuesday, Roast Dinner Wednesday, Around the World Thursday** and **Fishy Friday**. We hope the children will enjoy the changes and please let us know what you think.

Further changes to the menu are planned for September when we'll hopefully be able to offer more choice.



CONNECTS-Food study



We are one of eight schools taking part in the **CONNECTS-Food study** which aims to support schools to implement healthy food policy.

The first phase of this research project will take place this half term and parents will be invited to take part in a workshop to tell us what factors influences what children eat in a school day. A flier giving you the times and dates of the zoom meetings has been emailed to you.

Create Your Mark!



This year has shown us how resilient and adaptable our children here at Swansfield are. It has been a year where everyday life and freedoms have been restricted; all of those fun and creative endeavours that we enjoy have been lost within the confines of our individual school bubbles.

As the new Art Subject Coordinator at Swansfield, I think we need to work hard to reignite our vibrant school culture and work together as a whole school, to ensure that our children's voices are at the heart of it. We need to bring back the fun!

This brings me to our new exciting art project which will reconnect us in our aim to put the focus back on our children to re-evaluate what they believe art is. As Pablo Picasso once said, *'Every child is an artist, the problem is how to remain an artist when he grows up.'* This project is our children's chance to respond to a visual stimulus and develop their ideas from this, creating their own artistic response, independent of adult direction.

To complete this project, we need your help! This mark will be created on rocks. Many children responded positively to the rock projects initiated during lock down in the North East and we believe that creating marks that

will stay embedded in each class garden for the following year group to enjoy, will be an sustainable way for the children to physically leave their 'mark', helping to create that whole school feeling of connection we have been sorely missing.

So, with this in mind.... **Please can we ask that your child brings a rock into school by Monday June 14th as this project will take place in that week.** Please be mindful, if you are collecting your rock from the great outdoors, not to take rocks from any National Parks or nature reserves. It is not our intention to cause any environmental harm during this project and we will not be applying any crafting products to our rocks that can be ingested by our wildlife.

As part of a course I am currently taking to promote Cultural Education in our school, I will be writing a blog about this project which will be published in the Culture Bridge North East magazine. We will provide you with the details for this at a later date, for anybody who is interested in having a read.

Alnwick Gardens are currently involved in a project called yarn bombing.

Yarn bombing is street art done in an environmental way, that is completed with yarn. You could join in by making pom poms which will be strung together and wrapped around aspects of The Alnwick Gardens such as trees or seats.

The aim of the Yarn bomb is around hope, change and coming out of a difficult time into a 'different kind of normal'. The Gardens aim to be putting the work up the week of the 21st June.

Thank you as ever for your support – we look forward to making art happen!

Laurie Horne-Smith
Art Subject Coordinator

Making Music in 2021-22

As with so much, the last year has taken a heavy toll on the musical experiences that we've been able to offer in school. We're hopeful that as the new school year begins, we can get our full musical life up and running once again!

We'll be welcoming Mrs Nicklen back and she will offer the following tuition through Music Partnership North:

Group recorder lessons - Years 1- 6

Group violin lessons - Years 2-6

Group clarinet lessons - Years 2-6

We also hope to recommence Ceilidh Band and details of this will be sent out in the September newsletter.

In addition to this it is hoped that we will be able to offer piano and vocal lessons. Details of the tutor for both of these will be confirmed following expressions of interest.

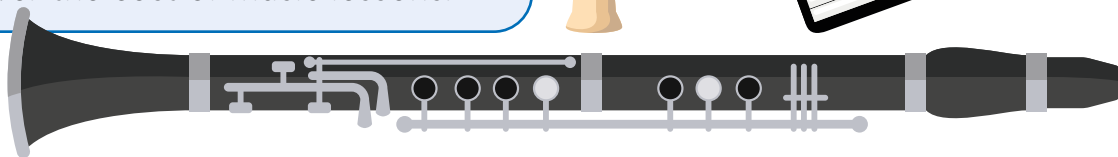
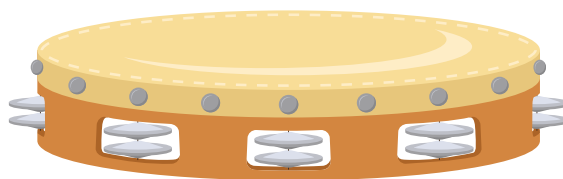
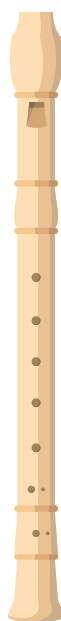
I am so keen to get our choir back up and running as soon as it is possible and safe to do so. We will keep a close eye on the guidance relating to this and begin again in September if we can. Choir will be available for children in Years 1-6.



A Google form will be sent out for expressions of interest in music tuition within the next week.

Prices will be confirmed when exact numbers are known but as a guide, we currently charge £3.50 for a larger group lesson and £4.00 for a smaller group of up to 4 children.

Please also note that once enrolled, the full term's fees will be billed and no refund can be offered. Children in receipt of Pupil Premium may be entitled to use some of their funding to cover the cost of music lessons.



If you have any questions about lessons, please do not hesitate to contact me:

anne-marie.grimes@swansfield.northumberland.sch.uk

I look forward to getting a musical new year started in September!

Anne-Marie Grimes

DIARY DATES

16th, 17th, 18th June
Larch Class Bikeability
(Level 1 & 2)

Thursday 24th June
Upper Key Stage 2 trip to
Broomley Grange

Thursday 24th June
Lower Key Stage 2
Olympics

21st, 22nd, 23rd June
Rowan Class Bikeability
(Level 1 & 2)

Monday 28th June
Key Stage 1 Olympics

Tuesday 29th June
Early Years Olympics

30th, 1st, 2nd July
Sycamore Class Bikeability
(Level 1 & 2)

Tuesday 6th July
Class Roll Up Day

Thursday 15th July
Upper Key Stage 2
Olympics

Friday 16th July
Summer Holidays begin

Wednesday 8th September
School reopens for the
AUTUMN TERM

Communications

We use many different ways to communicate with parents.



Keep up to date through the school website at:
www.swansfield.northumberland.sch.uk



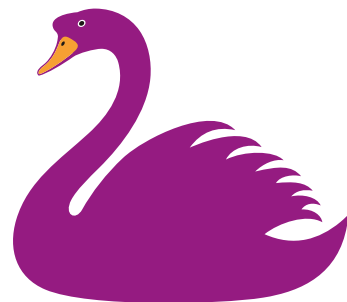
Email the office at:
admin@swansfield.northumberland.sch.uk



Check the text messages received from
Teachers2Parents
- please ensure that the office have an up to date mobile number for you.



Read the **Head Teacher's weekly blog** posted on the website and on Facebook every Monday for the very latest news.



Swansfield Park
Primary School



**Swansfield Park Primary School, The Avenue,
Alnwick, Northumberland NE66 1UL**