

NEWSLETTER



Swansfield Park Primary School, The Avenue, Alnwick, Northumberland NE66 1UL

FEBRUARY 2019

Communications

We use many different ways to communicate with parents.



Keep up to date through the school website at:
www.swansfield.northumberland.sch.uk



Email the office at:
admin@swansfield.northumberland.sch.uk



Check the text messages received from **Teachers2Parents** - please ensure that the office have an up to date mobile number for you.



Read the **Head Teacher's weekly blog** posted on the website and on Facebook every Monday for the very latest news.

Welcome back to the second half of the school year – it's frightening how quickly time flies when we're having fun!

We've had a really positive year so far and we are now looking forward to a continuation of the better weather (hopefully) and lots of exciting events starting with **World Book Day on Thursday 7th March**. A week later we will be enthusiastically raising money for **Comic Relief** so watch out for the wild and wacky activities.

At the end of last half term we received the **Education and Skills Annual Report 2017/18** which is written by Dean Jackson, Northumberland's Director of Education. For us at Swansfield Park it makes very pleasant reading as **we are listed in the 20% of primary schools graded as outstanding** and also **top of the Northumberland primary schools** with 83% of our year 6 children having achieved the expected standard or better in reading, writing and mathematics combined. *Please have a look for yourselves on the school website or follow this link:* http://committeedocs.northumberland.gov.uk/MeetingDocs/40534_M9157.pdf

We have a few staffing changes in the pipeline. **Miss Whitlow** has gone on maternity leave and **Mrs Grimes** is going to teach Plum Class and **Miss Freeman** will be in nursery every day. **Mr Shotton** has decided to leave teaching at the end of this year to further his academic career. We are grateful for all his hard work and advice as he has supported our transition to a primary school – he will be a hard act to follow so we are starting the recruitment process soon.

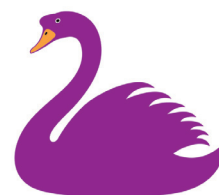
I'm delighted that we have appointed **three new governors** to give us a full complement on the governing body. **Maria Louisa Avila-Jimenez** is our new parent governor and we have co-opted **Claire Mead**, Contagious Youth Worker and **Hilda Blythe**, a retired headteacher.

Best Wishes

Jenny Smith



Looking forward to seeing you at our events this term.



Swansfield Park
Primary School





Miss Back is a UK Parliament Teacher Ambassador!

I was very lucky to be chosen out of 400 applicants to take part in the Parliament Ambassador training. The training was packed with fantastic opportunities including a tour of the house of Commons and the House of Lords. We were also very privileged to have a tour of the Speakers apartments at Westminster followed by a speech and question and answer session with John Bercow himself. Our workshops included finding out the work of an MP, the work of a select committee, including the work of a petitions committee, the work of a Peer from Baroness McIntosh of Hudnall, the role of a deputy speaker from the Baroness Garden of Frognal and the role of the Doorkeeper. I am excited to bring this information back to school and encourage children to use their voices to make a change and understand Democracy within our country.

Attendance

A group of governors have been working with the Education Welfare Officer and school staff to produce this leaflet which will be issued to parents if we have concerns about your child's attendance.

Every school has an attendance target – ours is set at 96%. Currently whole school attendance is slightly below this at 95.4%.

If you receive one of these leaflets, please take time to read it. There is information about absence, lateness and holidays in term time.

Several parents have raised the issue of children's attendance being highlighted when they have been genuinely ill. We have given this a great deal of consideration and feel that it is essential that parents are notified when attendance is flagged up by the EWO in case other issues then surface and further support is needed.



Swansfield goes nut free

We have children in school with severe nut allergies. These allergies are serious and cause a rapid and life threatening reaction known as anaphylaxis.



Please be mindful of this if you are preparing packed lunches for your child and please avoid including any nut products.

Our school kitchen doesn't use nuts in the preparation of meals.

We have reviewed our food and packed lunch policies and reissued our packed lunch information leaflet.

WORLD BOOK DAY

7 MARCH 2019

As usual, we are looking forward to celebrating World Book Day in school. We invite everyone to dress up as their favourite book character and ask for £1 donation. All money raised will go directly to literary resources within school. One of our whole school targets this year is to build vocabulary and to help our children grow the quantity and quality of words that they use on a

day to day basis. With this in mind, on World Book Day, we are going to engage in some whole school story writing with an emphasis on the use of ambitious and exciting word choice. In addition, each class will compile a short list of their favourite words from one of their favourite books and share these words with a partner class. Hopefully, by the end of the day, we'll all have learnt some new words and we'll be able to share these with you at home. We'll also ensure that our stories are shared so that they can be enjoyed by the whole school community!



At the beginning of term we got two new playgrounds partially funded by the Healthy Pupils Capital Fund (sugar tax)

We have a challenging climbing area with a social slide just next to the playground and some lower equipment in the nursery garden.

The new play equipment has been well received, we have introduced a rota to ensure that all children get a turn and that we control the number of children climbing at any time. All staff are aware of the risk assessments and we are supervising these areas accordingly. Please do not allow your child to climb on the play equipment before or after school as the appropriate controls are not in place and school will not be responsible for any accidents.

Stars of the Week

Well done to our stars of the week for last half term. These children were chosen for working towards the 5 R's – being responsible, reflective, ready, resourceful and resilient:

**They were:
Freya Cooke, Liam Wass,
Riley Campbell and
Zack Prokic.**



DIARYDATES

Safeguarding update

The safety of our children is of paramount importance.

We have spent a lot of money to secure the boundary fence and the hedges on the other side of the fence adds another layer of security.

Recently we have noticed children climbing on the hedges and in doing so they are putting themselves in danger as well as jeopardising the safety of others.

Please make sure that the children play safely in park after school.

Playground supervisors have had to ask people not to approach or talk to children through the fence during playtimes.

We try to keep children away from boundaries and we appreciate your support in keeping all children safe.

**SWANSFIELD PARK
NEWSLETTER**

FEBRUARY 2019

Thursday 28th February
Larch Class Friends & Family Lunch

Tuesday 5th March
Junior Mentoring Meetings 8.30 – 12 noon

Wednesday 6th March
Reception Parent Consultations 1.00 - 6.30pm

Wednesday 6th March
Infant and Junior Mentoring Meetings 1- 6.30pm

Thursday 7th March
Infant Mentoring Meetings 8.30 – 12 noon

Thursday 7th March
World Book Day

Friday 8th March
Hipsburn v Swansfield Park Rangers 3:45pm

Wednesday 13th March
Maple Class Friends & Family Lunch

Wednesday 13th March
Swansfield Park Rangers v Whittingham 3:30pm

Thursday 14th March
Sycamore Class Assembly – 2.30pm

Friday 15th March
Comic Relief

Saturday 16th March
Coffee Morning at Northumberland Hall 9:30 – 12

Thursday 21st March
Upper KS2 Visit to Sunderland Winter Gardens

Wednesday 27th March
Apple Class Friends and Family Lunch

Thursday 28th March
Ash Class Assembly 2:30pm

Wednesday 3rd April
Sycamore Class Friends & Family Lunch

Thursday 4th April
Spring Assembly (by invitation only)

Friday 5th April
School Closes EASTER HOLIDAY

**COMIC
RELIEF**