

NEWSLETTER



Swansfield Park Primary School, The Avenue, Alnwick, Northumberland NE66 1UL

JANUARY 2019

Communications

We use many different ways to communicate with parents.



Keep up to date through the school website at:
www.swansfield.northumberland.sch.uk



Email the office at:
admin@swansfield.northumberland.sch.uk



Check the text messages received from **Teachers2Parents** – please ensure that the office have an up to date mobile number for you.



Read the **Head Teacher's weekly blog** posted on the website and on Facebook every Monday for the very latest news.

Happy New Year

and welcome back to the spring term at Swansfield Park – we hope you enjoyed the festivities over Christmas and the New Year.

Looking back, 2018 was quite a year for Swansfield Park as we completed our first year as a primary school. We were delighted with the **Year 6 SATs results** which, in terms of children achieving the expected standard in reading, writing and maths, places us top in the Alnwick partnership and **second in the County** – a great achievement of which we can be justifiably proud.

We also received a letter from Nick Gibb, Minister for Education, commending us on our achievement in the **Year 1 phonics check** – *well done to all our children and staff for their hard work.*

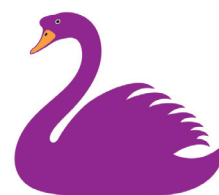
Would you like to become more involved in the running of our school? Why not become a parent governor – we currently have a vacancy. Governors play a very important role within our school, so if you are interested and would like further details, please speak to me.

We look forward to seeing you at our events this term.

Best Wishes

Jenny Smith

Jenny Smith



Swansfield Park
Primary School





Meet our new Education Welfare Officer, Mrs Gina Davidson

I am the Education Welfare Officer for the Alnwick Partnership of Schools. I have been an Education Welfare Officer since March 2017, but have worked in schools prior to this since 2005 in many supportive roles.

As the Education Officer for Swansfield Park Primary School, my role is to work with school and yourselves, as parents, to enable your children to have the maximum opportunity to benefit from their education entitlement.

The Government class a pupil with 90% attendance as a persistent absentee. Any absence from school can affect the pattern of your child's schooling and regular absence will seriously affect your child's learning. A pupil's absence also disrupts teaching routines, impacting on others in the same class.

As a mother to 4 children, I understand that, sometimes, children are genuinely ill and absence from school cannot be avoided. However, communication with school is vital so that you and your child can be supported in the best way possible.

If you have any queries or concerns regarding your child's attendance at school, please do not hesitate to contact me on 07973 785 138.

A new look for the studio...

It has been great to work alongside Mrs Smith on developing a quiet space for the school in the studio.

This permanent space is available for all pupils to use to support their emotional and spiritual wellbeing. Designed on the themes of peace, forgiveness & living together there are a variety of activities that the pupils can use from fizzy forgiveness & forgiveness stones (letting go of bad things they have done & hurts) to empty chair (thinking about those that they have lost in their lives).

There will also be ELSA books to develop emotional literacy and colouring to help the pupils focus their emotions. The worry monster is also on hand for the pupils concerns. Staff ask for pupils to write their names on the worries when they place them in the monster so that they can support them with their concerns. I am so pleased to see that the space is already being appreciated by pupils and I look forward to its official naming! If you have an idea do let Mrs Smith know.

Claire Mead, Youth & Schools Worker

www.contagiouscharity.webs.com



Defibrillator Training

We have a new portable defibrillator which is kept in the school office and can be used in the locality when needed.

It is really important to train as many people as possible so we have arranged for **Dougie McEwan** from the **Stephen Carey Fund** to lead a training session on

Tuesday 15th January at 6pm

Big Garden Birdwatch



This January we will be taking part in the big schools' birdwatch – why don't you spend an hour to take part in the

Big Garden Birdwatch
on the weekend of 26th - 28th January

Family Learning Challenge

The children are really enjoying the weekly challenge that Picture News provides.

Each week in Mrs Smith's assembly, there is a topical picture and caption to discuss. Themes that the children have enjoyed discussing have been **disability**, **poverty** and **animal rights**, just to name a few. As well as developing the ability to formulate and articulate a point of view, these discussion starters are an excellent opportunity to widen vocabulary and learn the meaning of new words. Indeed, vocabulary development is a key priority throughout all key stages this academic year.

With this in mind, we invite you to report on a local, national or international issue or event which is important or significant to your family. This report could take the form of a **short video**, a **newspaper article**, or a **photo/picture with a caption**.

All we ask is that within the subject matter that you focus upon, *the children learn and discover the meaning of some new vocabulary*. It would be wonderful if the end product could include **three new and learnt words**. These can then be shared through displaying and talking about each project with the opportunity for us all to learn many more than three new words!

We do hope that you will join in with this project and we look forward to receiving your projects by Thursday 14th February.



Autumn Term Awards

The Sylvia Elliott
Progress Cup:
Ethan Lundy

Gold Certificates:

**Finnley Reid,
Georgia McVey,
Alicia Kinghorn,
Elise Kelly,
Fraser Allan,
Amy Evans,
Ellie Lang,
Imogen Ogle,
Florence Cole,
Aimee McDonogh,
Jessica Keogan
and Noah Broster.**

Stars of the Week:

**Kobi Horne-Smith,
Evie Mitchell,
Connor Bowie,
Joseph Lee,
Lee Melech
and Archie Muers.**

SPRING TERM 2019

DIARY DATES

Experience has taught us to expect severe weather during this half term therefore just as a reminder here are the notification procedures again.

Listen to
BBC Radio Newcastle 95.4fm

Go to the Northumberland County Council website
www.northumberland.gov.uk

Check your mobile phone
for our text messaging services

Occasionally it is necessary to send children home due to worsening weather conditions.

Ensure that your contact details are up to date and inform the class teacher of any exceptional arrangements for the collection of your child

Make arrangements with a relative or close friend to take care of your child until you are able to get home

Make sure that **your child is aware** of these arrangements

Check your mobile phone
for our text messaging service.

Monday 14th January	SATs Meeting - 5pm
Tuesday 15th January	Defibrillator Training - 6pm
Wednesday 16th January	Oak Class Friends & Family Lunch
Friday 18th January	'Swap Shop' Evening - 7.30pm start
Thursday 24th January	Rowan Class Assembly - 2.30pm
Wednesday 30th January	Ash Class Friends & Family Lunch
Thursday 31st January	Oak Class Assembly - 2.30pm
Tuesday 5th February	Safer Internet Day
Wednesday 6th February	Plum Class Friends & Family Lunch
Wednesday 13th February	Apple Class Friends & Family Lunch
Thursday 14th February	Chestnut Class Assembly - 2.30pm
Friday 15th February	School closes HALF TERM HOLIDAY
Monday 25th February	School reopens
Thursday 28th February	Larch Class Friends & Family Lunch
Tuesday 5th March	Junior Mentoring Meetings 8.30 - 12.noon
Wednesday 6th March	Reception Parent Consultations 1.00 - 6.30pm
Wednesday 6th March	Infant and Junior Mentoring Meetings 1- 6.30pm
Thursday 7th March	Infant Mentoring Meetings 8.30 - 12.noon
Wednesday 13th March	Maple Class Friends & Family Lunch
Thursday 14th March	Sycamore Class Assembly – 2.30pm
Friday 15th March	Comic Relief
Thursday 21st March	Rowan Class Friends & Family Lunch
Thursday 28th March	Ash Class Assembly 2:30pm
Wednesday 3rd April	Sycamore Class Friends & Family Lunch
Thursday 4th March	Spring Assembly (by invitation only)
Friday 5th April	School Closes EASTER HOLIDAY

