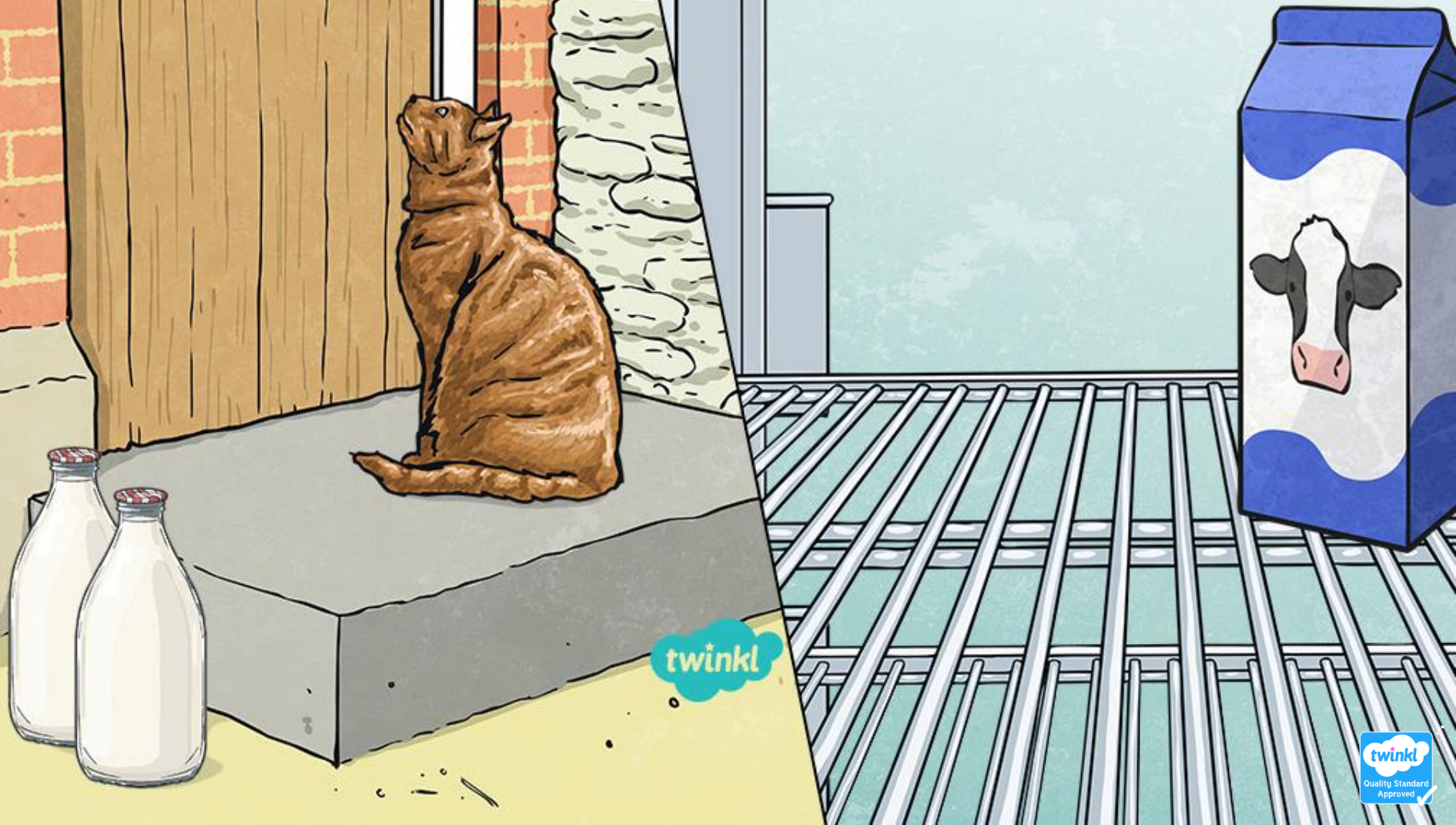


Pints and Litres



twinkl

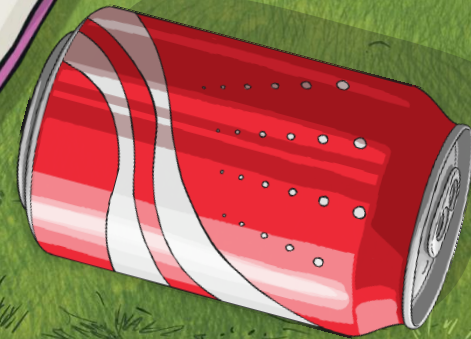
Imperial Units of Volume and Capacity



However, we do use some imperial units of measurement as well. Pints are the most common imperial units we use to measure volume and capacity. Although there are eight pints in a gallon, which is another imperial unit of volume and capacity, we do not normally use gallons as a measurement in the UK.

Can you think of anything that we would measure in pints?

...only use measurement to and capacity. The most common metric units we use are litres and millilitres.



Pints to Litres



The customers of both companies need to convert between the two to work out which company they should order from.

Two different milk delivery companies meet...

How did you calculate 5×0.6 ?

$\approx 0.6\text{l}$

...a in pints

...s $\approx 3\text{l}$

One way of calculating this would be to use the number facts that you already know.

$$5 \times 6 = 30$$

$$5 \times 0.6 = 3$$

Pints to Litres



1 pint \approx 0.6l

What strategies will you use to convert from pints to litres?

number facts

another method?

add

$\div 2$

double

halve

1 pint	2 pints	3 pints	4 pints	5 pints	6 pints	7 pints
0.6l	1.2l	1.8l	2.4l	3l	3.6l	4.2l

$$5 \times 6 = 30$$

$$5 \times 0.6 = 3$$



Litres to Pints



1l \approx 1.8 pints

What strategies will you use to convert from litres to pints?

add

halve

number facts

$\div 2$

double

another method?

1l	2l	3l	4l	5l	10l
1.8 pints	3.6 pints	5.4 pints	7.2 pints	9 pints	18 pints

Milk Delivery Problems



Maria and her brother, Karolis, bought 3 pints of milk already had 3 l much milk did your answer in

They used 4 litres of the milkshakes. How did they have left of answer in pints.

3 litres = 5.4 pints
 $5.4 \text{ pints} + 3 \text{ pints} = 8.4 \text{ pints}$
They had 8.4 pints of milk in

8.4 p
They had



1 pint \approx 0.6l

1l \approx 1.8 pints

Milk Delivery Problems



Maria says that more than 8 litres was delivered overall. Karolis says that it was less than 8 litres. Who is correct? Explain how you know.

Milko delivered the following amounts of milk to Maria's family:

Monday	Tuesday	Wednesday	Thursday	Friday
2 pints	1 pint	3 pints	2 pints	4 pints

How did you calculate the answer?

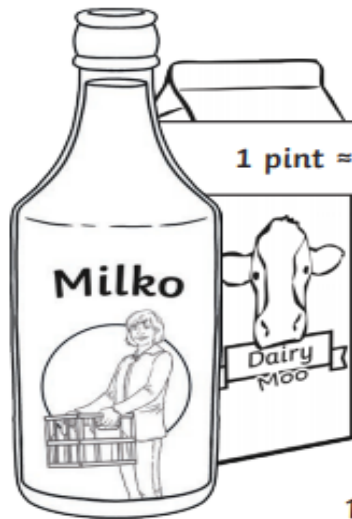
Milko delivered 12 pints altogether. We need to convert this amount to litres. One way of doing this would be to split it into 10 pints and 2 pints.

$$\begin{aligned} 10 \text{ pints} &= 6\text{l} \\ 2 \text{ pints} &= 1.2\text{l} \\ 6\text{l} + 1.2\text{l} &= 7.2\text{l} \end{aligned}$$

This is less than 8 litres – Karolis is correct.

Your turn

Two different milk delivery companies measure their milk in different ways. Milko uses glass bottles that are measured in pints while Dairy Moo uses cartons that are measured in litres.



The customers of both companies need to convert between the two to work out which company they should order from.

1 pint \approx 0.6l

1l \approx 1.8 pints

What strategies could you use to convert between pints and litres?

double

halve

$\div 2$

add

number
facts

another
method

1. Fill in the missing measurements in the table to convert from pints to litres:

1 pint	2 pints	4 pints	5 pints	8 pints	10 pints
0.6l					

2. Fill in the missing measurements in the table to convert from litres to pints:

1l	2l	4l	5l	8l	10l
1.8 pints					

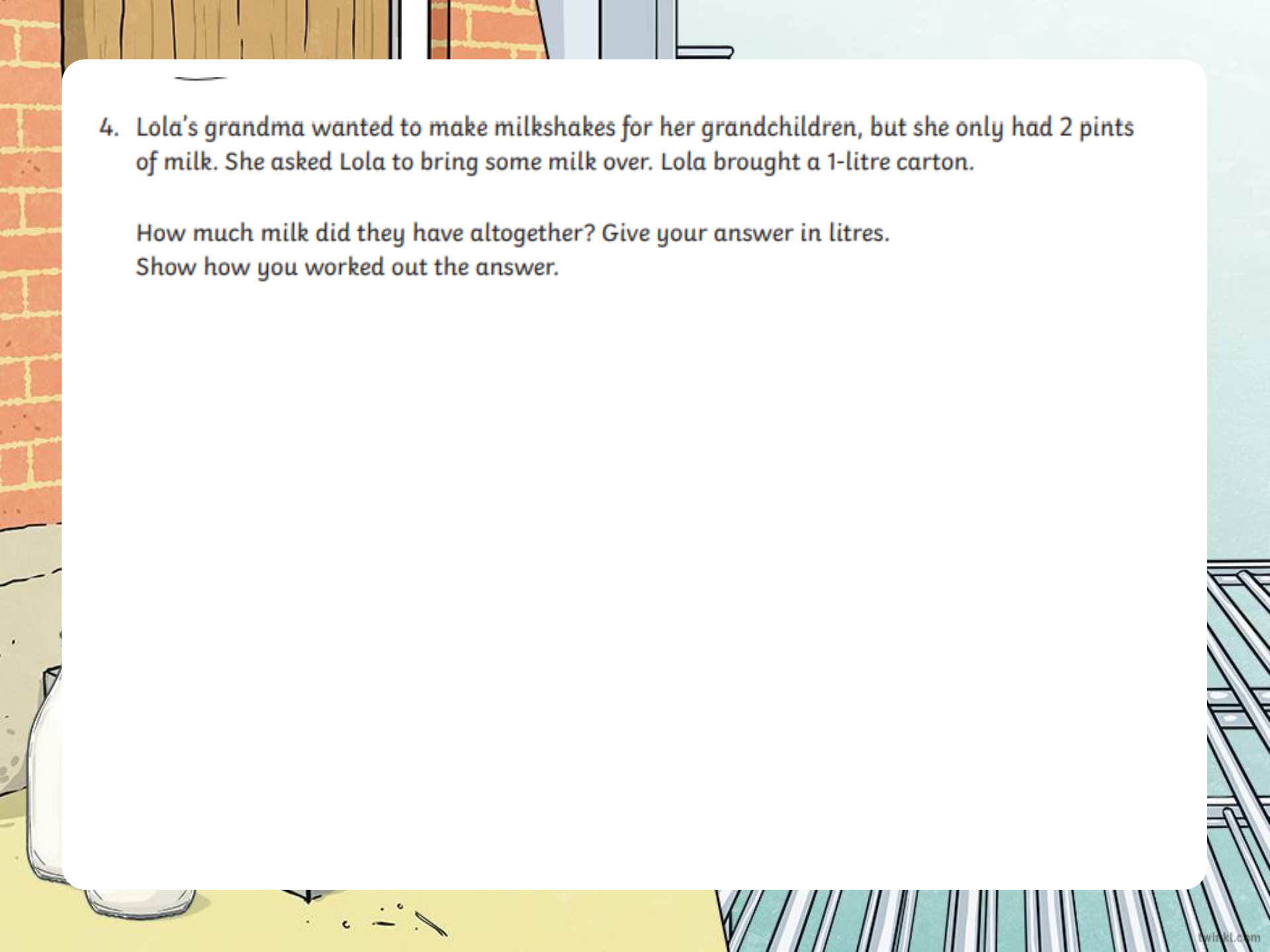
3. Lola's family have their milk delivered by Dairy Moo, which measures milk in litres; however, Lola's grandma has her milk delivered by Milko, which measures milk in pints. Here is the milk that Milko and Dairy Moo delivered each day of the week.

For each day, circle the measurement that is greater.

	Milko	Dairy Moo
Monday	2 pints	2l
Tuesday	8 pints	2l
Wednesday	5 pints	4l
Thursday	8 pints	5l
Friday	4 pints	1l



For each day
write down the
greater
measurement.

- 
4. Lola's grandma wanted to make milkshakes for her grandchildren, but she only had 2 pints of milk. She asked Lola to bring some milk over. Lola brought a 1-litre carton.

How much milk did they have altogether? Give your answer in litres.
Show how you worked out the answer.