

British Birds

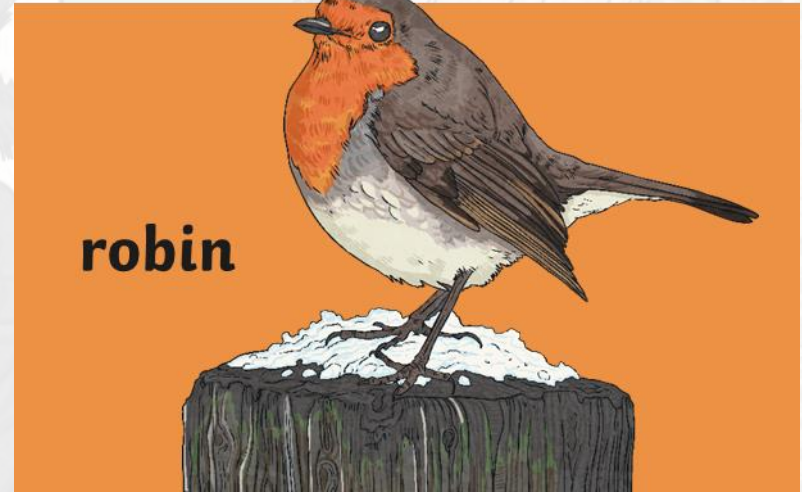


twinkl

Click a bird to find out more...



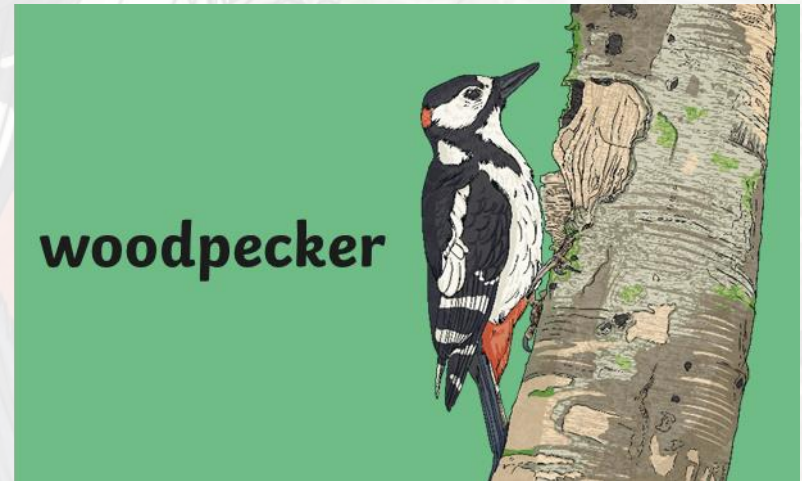
chaffinch



robin



blue tit



woodpecker

Blue Tit Interesting Facts

Blue tits are common and wide spread throughout the British Isles but do not live on the Shetlands or Orkney. They rarely move far from where they hatch, preferring to live close by in the surrounding area.

Although males and females look very similar, it is the male that is the brighter colour.

Blue tits are very neat nest-builders. They have been known to use lavender, mint and curry plants as disinfectant!



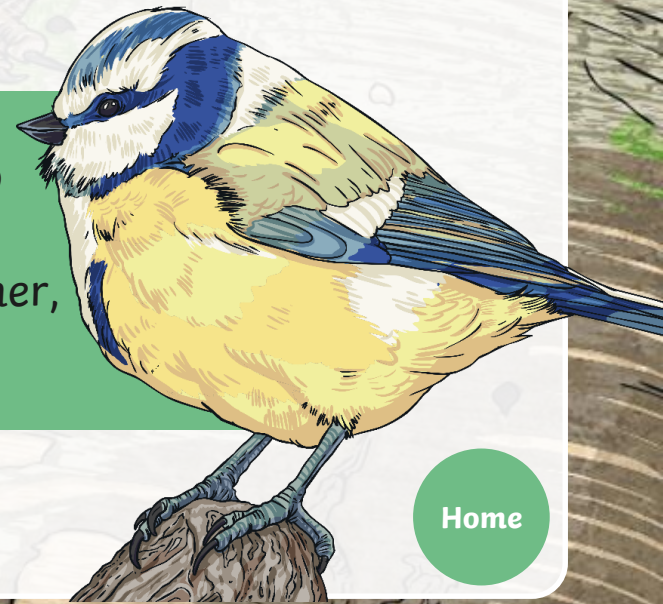
Click
here to
hear its
song.

Blue Tit Interesting Facts



Blue tits usually nest in trees but nests have been spotted in items as surprising as letterboxes and street lamps.

They vary their diet according to the season. In winter, blue tits eat insects, whereas in the summer, they eat seeds.



[Home](#)

Robin Interesting Facts

Each robin has a totally unique red breast pattern.

In a recent poll, the robin was voted the UK's favourite bird.

Robins are omnivorous as they can eat anything from berries to spiders.

If you want robins to nest in your garden, do not use round-holed bird boxes as robins will not enter them.

Young robins do not have red breasts. They do not develop this until after their first moult.

Click
here to
hear its
song.



Robin Interesting Facts



Robins will sing all year long, although they are quieter in the summer when they moult.

They are fiercely territorial and will chase away any intruders, often fighting to the death.

Unless they have a mate, there will never be more than one robin in a garden.

Postmen were once called robins because they also wore a red coat. Robins are associated with Christmas cards because 'robins' delivered them!



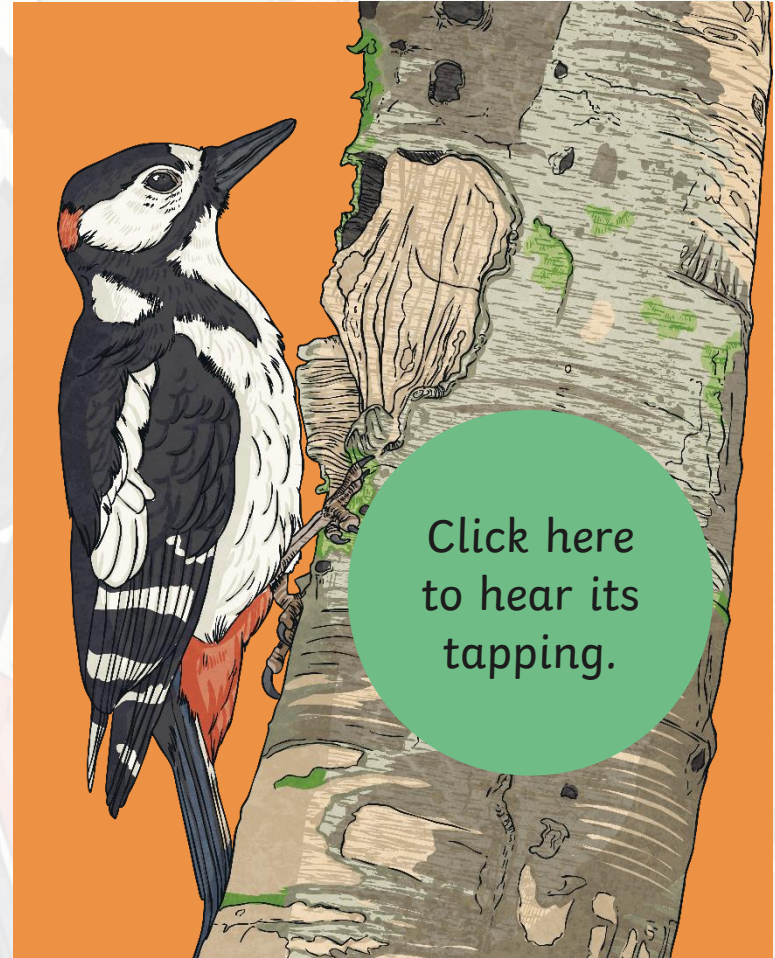
[Home](#)

Woodpecker Interesting Facts

A woodpecker's tongue is up to 4 inches long, depending on the species; some woodpeckers are capable of wrapping it around their skulls.

Woodpeckers can drum up to 20 times per second.

Woodpeckers have been seen to drum a range of objects including weather vanes and metal posts.



Woodpecker Interesting Facts



Woodpeckers are omnivores, they often supplement their diet with other birds' eggs!

Woodpeckers drum in order to attract a mate, usually between January and June. Both male and female woodpeckers do this.

There are around 200 different species of woodpecker but only three are found in the UK: the great spotted woodpecker; the green woodpecker and the lesser spotted woodpecker.



[Home](#)

Chaffinch Interesting Facts

The chaffinch is the UK's second commonest breeding bird.

It will not feed off bird tables but will hop about on the ground and in hedges to look for food.

It has a patterned plumage that helps to camouflage it while on the ground.

It prefers gardens with lots of trees; oak trees are its favourite.



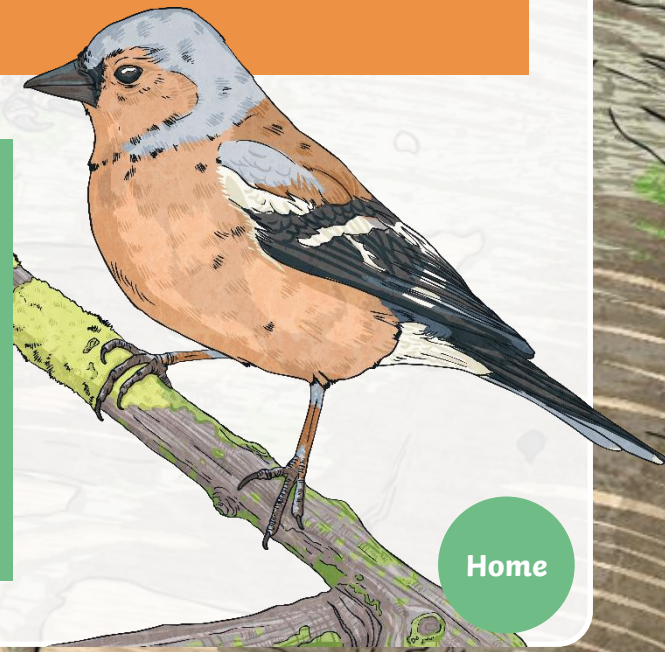
Chaffinch Interesting Facts



Chaffinches have regional accents! Their song is slightly different depending on where they are found in the UK.

They are omnivores, eating insects and seeds.

Chaffinches can live for up to three years. During the Victorian era, it was fashionable to have a caged chaffinch in your house due to its lovely singing voice. Trapping chaffinches in order to cage them was outlawed in 1896.



[Home](#)

Have You Seen These Birds?



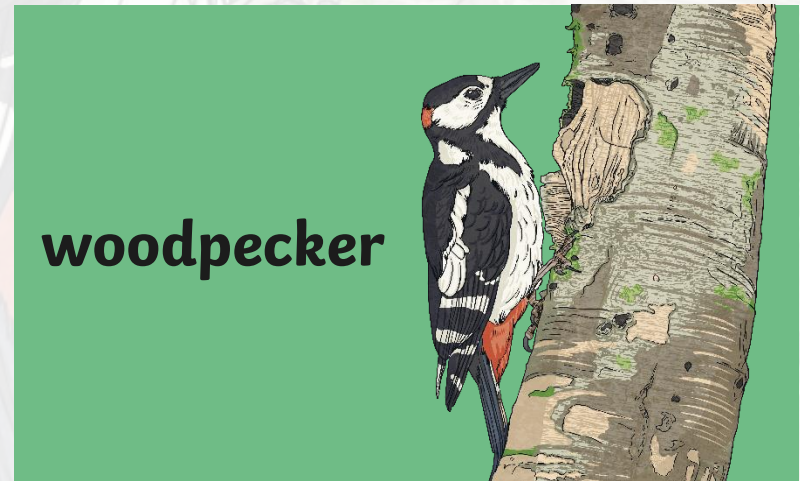
chaffinch



robin



blue tit



woodpecker

