

NEWSLETTER



Swansfield Park Primary School, The Avenue, Alnwick, Northumberland NE66 1UL

JANUARY 2020

Happy New Year

and welcome back to the spring term at Swansfield Park – we hope you enjoyed the festivities over Christmas and the New Year.

Last term many of you very kindly completed our parent questionnaire which I am pleased to say was overwhelmingly positive. We have noted the areas which scored slightly lower particularly parental and community involvement.

There is already an established focused improvement group looking into the area of parental involvement so watch out for their recommendations in the New Year. As for community involvement this is an area of development close to hearts but just read on to see that our choir have been out and about within the town and have a look at the mosaic work that year 5 have been doing with John Craggs on behalf of the Alnwick in Bloom Committee. This year marks the start of our collaboration with Ian Dent, Outreach worker from the Alnwick Gardens as we look to improve the outdoor area in front of Ash and Oak Classes and improve our allotment by installing a poly tunnel which can also be used by the wider community.

We look forward to seeing you at our events this term.

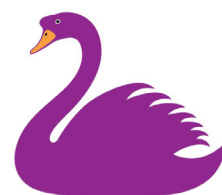
Best Wishes


Jenny Smith



Would you like to become more involved in the running of our school?

Why not become a parent governor, we currently have a vacancy. Governors play a very important role within our school, if you are interested and would like further details please speak to me.



Swansfield Park
Primary School





Friends update

After a great first term we are all excited for the Spring Term.

So far we have two exciting events planned.

On **7th February** we have a
“Swap Shop Evening”
Details to follow.

On **Thursday 13th February** (last day of term) we have the new

“Valentine’s” Disco.

This disco is in place of the Christmas Disco and we would love your feedback at the end of the year on whether you think this has worked.

Already this year the Friends have paid for buses for school trips, Christmas Dinner for all the Children and Christmas Panto and the new benches in the playground.

Thank you to all those that have supported the previous events and we look forward to seeing you at the upcoming events this term.



Please will all parents park responsibly away from The Avenue.

During the icy weather vehicles were seen sliding dangerously as children were approaching school.

County Councillor, Gordon Castle, commented that “This is a continuing problem that really must be resolved. I have had no choice but to ask the parking wardens to carry out enforcement duties at key times of day.

It really is up to drivers to consider the safety of our children before their own convenience.”

Big Garden Birdwatch



This January we will be taking part in the big schools' birdwatch – why don't you spend an hour to take part in the

Big Garden Birdwatch
on the weekend of
25th - 27th January

Experience has taught us to expect severe weather during this half term therefore just as a reminder here are the notification procedures again.

Listen to

BBC Radio Newcastle 95.4fm

Go to the Northumberland County Council website

www.northumberland.gov.uk

Check your mobile phone
for our text messaging services

Occasionally it is necessary to send children home due to worsening weather conditions.

Ensure that your contact details are up to date and inform the class teacher of any exceptional arrangements for the collection of your child

Make arrangements with a relative or close friend to take care of your child until you are able to get home

Make sure that **your child is aware** of these arrangements

Check your mobile phone for our text messaging service.



Autumn Term Awards

The Sylvia Elliott Progress Cup:
Gabrielle McTigue

Gold Certificates:

Katy Hutchins,
Charlie Bell, Sofia
Pearse, Isla Slater,
Emmie Keenan,
Ailsha Howd, Evie
Saunders, Heath
Hunter, Hector Beere,
Maisie Butroid,
Taylor Coxford and
Frances Molineux

Stars of the Week:

Fraser Allan,
Teigan Hardman,
Jake McMillan Poole,
Niamh Black,
Patrick Tilley and
Isla Gordon.



Musical Maestros

We have many talented musicians here at Swansfield; **Emma** and **Ethan** are just two of them. Those of you who saw *Cinderella Rockerfella* will recognise Emma and appreciate how she achieved a merit in her Grade 2 Singing Exam.

This is what Ethan has to say:

Learning to play an instrument is very rewarding although challenging at times. I find playing the piano at school is great, because you get to have your lesson in a nice quiet place. I have recently done my grade 1 piano exam! I passed it with a distinction. I never actually wanted to do grades but suddenly I just felt like doing one. I have been playing the piano for 6 years so I knew I was ready for it.

A few tips for starting to play an instrument, is to start off small and work your way up, always listen to your teacher and just practice and practice. Playing an instrument is so rewarding.



CHOIR NEWS

The autumn term was really successful and enjoyable for choir.

We began the school year by singing with the **Pearl of Africa Choir** which is always such a fantastic experience.

Just after the half term holiday, we were delighted to be asked by **Starbucks** to help with their grand opening. The children sang with such enthusiasm and energy and a representative from Starbucks management commented that **our contribution helped to make it the best opening that he'd ever been to!**

With Christmas rapidly approaching, we decided that we'd have a day out in the community to share our Christmas music with the people of Alnwick. So, on Friday the 13th December, we set out through the wind and rain to carol sing the length and breadth of the town. We began at **Sainsbury's** and it was lovely to have some friends and family there to support us as

we began our busy day. Next, we journeyed on to **Weaver's Court**. We always receive such a warm welcome here and it's lovely to know that our visit means so much to the familiar faces who look forward to us visiting each year.

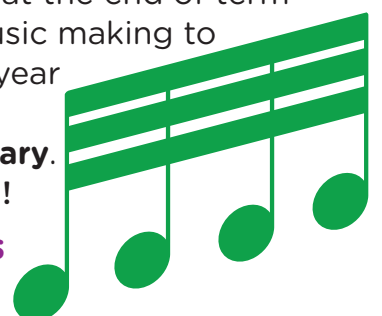
By this time, were ready for refuelling so we hopped over to **Starbucks** and after singing a few carols for the customers, we tucked into our packed lunches and enjoyed a little hot drink on the house! After a bracing walk, we arrived at **Summerhill** care home to the residents who had eagerly gathered in the communal lounge awaiting our arrival.

This provided some really special moments, the most poignant being a communal rendition of *Away in a Manger* with singers ranging in age from 4 to 104! Music is so powerful in its ability to cross divides and unite. I wonder if the children realised what joy they brought to the residents that day? Our final stop was **Costa Coffee** in town before we made it back to school just in time for the hometime bell!

Our final engagement of the term was at our **Christingle service in St Paul's Church**. We are so lucky to have a church with such a super acoustic right on our doorstep. **We thought we sounded rather good!**

I'm always so proud of the commitment and hard work that all the children in our choir show but this seems to be particularly the case at Christmas. Even at the end of term when we're feeling tired and need a holiday, choir put 100% into music making to bring cheer to others. I'm looking forward to the rest of the school year and I wonder what exciting opportunities the next two terms will bring. New members are welcome to join us from **Tuesday 14th January**. **All we ask is that you're hard-working, enthusiastic and committed!**

Mrs Grimes





MOSAICS

In the run up to Christmas Staff from the Gallery Youth Project and artist John Craggs worked alongside pupils from Swansfield Park Primary School to create two inspiring mosaic panels.

The designs for the mosaics were based on pupil's drawings with John working up the final designs drawing on ideas from members of Alnwick in Bloom who commissioned and financed the panels with support from amongst others the Alnwick Lions and MACPI.

The two completed panels will be installed in one of the flowerbeds in the main Greenwell Lane car park. This has been a good example of a community partnership project between Alnwick in Bloom, Gallery Youth and Swansfield Park Primary School and we hope that this collaborative approach will continue to inspire the pupils and add to the culture of the community.

John, Ian and I have had a great time working with the pupils and teachers at the school and would like to thank everyone involved for their cooperation and enthusiasm.

Sue Patience,
Development Worker, Gallery Youth.

FAMILY LEARNING <CHALLENGE

Bailiffgate's big summer exhibition in 2020, in partnership with Jorvik Viking Centre (York), will be all about the Vikings. Our unique collaboration will explore fact and fiction, perceptions and misconceptions about the Vikings and evidence of their legacy in Northumberland.

The exhibition will be popular and busy and we want every visitor to be able to see the fabulous Viking-themed artwork produced by pupils from your school. Our previous summer exhibitions have received hundreds of entries from local schools.

As well as prizes for best entries, every single artwork received will be edited into a video and projected continuously throughout the exhibition. Local children and their families will see their pieces displayed on a large 2-metre-wide screen on the main wall of the exhibition.

Children can enter **one** piece of work from **either** of these categories.

<CATEGORY 1

Draw or paint a Viking Warrior (can include shield, sword, helmet)

<CATEGORY 2

Design a Viking Longship, with a figurehead and other ornamentation



All artwork must be:

- on A4 size paper, in landscape format
- pen, pencil, crayon or paint
- no computer generated images
- no pastels, chalk or collages

All artwork must have the following on the reverse in pencil:

- Pupil's first name
- Age
- Subject e.g. Viking Warrior or Viking Longship
- Class or Form
- School

NB: Please do not use pen on the reverse as it shows through when the work is scanned and visually spoils the artwork.

Please bring your artwork to school no later than Monday 27th January.
We will take the entries down to Bailiffgate Museum.

SPRING TERM 2020

DIARY DATES

Communications

We use many different ways to communicate with parents.



Keep up to date through the school website at:
www.swansfield.northumberland.sch.uk



Email the office at:
admin@swansfield.northumberland.sch.uk



Check the text messages received from **Teachers2Parents** - please ensure that the office have an up to date mobile number for you.



Read the **Head Teacher's weekly blog** posted on the website and on Facebook every Monday for the very latest news.

Swansfield Park
Primary School,
The Avenue, Alnwick,
Northumberland
NE66 1UL

Wednesday 15th January	Reception Application deadline via Northumberland's online portal
Thursday 16th January	Oak Class Friends & Family Lunch
Thursday 23rd January	Rowan Class Assembly - 2.30pm
Wednesday 29th January	Ash Class Friends & Family Lunch
Thursday 30th January	Oak Class Assembly - 2.30pm
Wednesday 5th February	Plum Class Friends & Family Lunch
Thursday 6th February	Chestnut Class Assembly - 2.30pm
Friday 7th February	Friends' Swap Shop Evening
Tuesday 11th February	Safer Internet Day
Wednesday 12th February	Apple Class Friends & Family Lunch
Thursday 13th February	Valentines Disco School closes HALF TERM HOLIDAY
Friday 14th February	Teacher Training Day
Monday 25th February	School reopens
Thursday 27th February	Larch Class Friends & Family Lunch
Tuesday 3rd March	Junior Mentoring Meetings 8.30 - 12.noon
Wednesday 4th March	Reception Parent Consultations 1.00 - 6.30pm
Wednesday 4th March	Infant and Junior Mentoring Meetings 1- 6.30pm
Thursday 5th March	Infant Mentoring Meetings 8.30 - 12.noon
Thursday 5th March	World Book Day
Wednesday 11th March	Maple Class Friends & Family Lunch
Thursday 12th March	Sycamore Class Assembly – 2.30pm
Friday 13th March	Sports Relief
Thursday 19th March	Rowan Class Friends & Family Lunch
Thursday 26th March	Ash Class Assembly 2:30pm
Monday 30th March	Spring Assembly (by invitation only)
Wednesday 1st April	Sycamore Class Friends & Family Lunch
Friday 3rd April	School Closes EASTER HOLIDAY