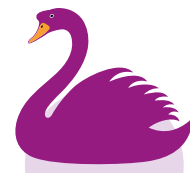


Drug Education

AND THE MANAGEMENT OF DRUG RELATED INCIDENTS



POLICY

Swansfield Park
Primary School

Rationale

This school is committed to the health and safety of everyone here. Current research indicates that drug use, both legal and illegal, is rising amongst young people. Drugs are a reality in children's lives and, as part of this school's policy of care and welfare we have a duty to inform and educate children about drug use.

Aims

- We will share the responsibility with parents and the community; we will educate pupils about the risks and consequences of drug use and misuse and encourage them to make healthy, informed decisions.
- We will increase children's knowledge, challenge attitudes and promote self-assertiveness.
- We believe that the misuse of any drug by members of the school community, within the school environment, cannot be condoned and will be dealt with consistently and clearly with regard to the needs of the school and the individuals concerned.
- Effective communication and co-operation is essential to the successful implementation of this policy.

Rationale

Aims

Objectives

The Drug Education Programme

The Management of a Drug Related Incident

Procedures

DEFINITION: WHAT IS A DRUG?

A drug is a substance which when taken into the body changes the way we feel, the way we see things and the way our body works.

This policy covers a range of drugs including medicines, tobacco, alcohol, solvents and illegal drugs.



Objectives

- To have a clear and agreed understanding among everyone in the school community about the implications and possible consequences of drug use/misuse.
- To develop a whole school approach to drug education in the context of the science curriculum, the P.S.H.E. curriculum and through collective worship.
- To explore attitudes and develop skills in making decisions about drugs.
- To develop assertiveness in order resist peer pressure
- To establish an atmosphere/situation/environment in which the school is free from the misuse of any drugs.
- To provide accurate information about a range of drugs including medicines, alcohol and tobacco.
- To clarify appropriate procedures in the management of drug related incidents.

The Drug Education Programme

All pupils will follow an integrated drug education programme that is responsive to their needs and relevant to their age, experience and maturity.

Specific drug related knowledge will be taught through the science and P.S.H.E. curriculum.

The skills of decision making, assertiveness and communication will be acquired in P.S.H.E. sessions through circle time, emotional literacy, philosophy for children and assemblies.

All staff will be provided with adequate training and support to help them deliver effective drug education and respond to situations with consistency and sensitivity taking account of religious, social and cultural issues.

We share responsibility for the education of pupils with parents who will be kept informed and involved through newsletters, awareness raising evenings and individual discussions when appropriate.

The school will work with other agencies to provide relevant information and co-ordinated support e.g. school nurse, drug advisory teachers and the life education teachers.



The Management of Drug Related Incident

There is a procedure for the management of drug related incidence agreed by staff and governors, of which all parents and pupils will be made aware.

A designated member of staff, Mrs J. E. Smith and governor, Mr W Grisdale, are responsible for the management of drug related incidents, offering sources of support and liaising with outside agencies.

Procedures

The school has a policy/procedure for the administration of medicines that must be followed for everyone's safety.

A designated member of staff, Mrs Y. Hammond is responsible for the storing and administration of medicines. (See school policy on Administration of Medicines)

The whole school environment is a no smoking area. A designated governor, Mrs. V. Young, is responsible for upholding this policy.

No alcohol will be consumed during the course of a normal school day.

The school will ensure that potentially harmful substances e.g. solvents, are stored safely. Pupils will be supervised carefully in the event of them having to be used in the course of their work. The use of aerosols is not allowed because of the potential risks to people with asthma or other bronchial problems.

No illegal or illicit substances should be brought to school or used on school premises.

To protect the health and safety of everyone in the school, regular checks will be made of the site to ensure that drug paraphernalia, particularly syringes, are cleared away.

Sanctions, of appropriate severity, will be applied to the intentional misuse of any of the substances described above by any member of the school community on the school premises or while on a school trip/visit.

Sanctions, up to and including exclusion, will be applied for:

- The possession of any drug with the suspected intention of misuse
- Misuse of drugs on school premises
- Supplying/dealing drugs for the purposes of misuse

Disciplinary action will be taken against staff involved in any of the above.



This policy has been formally adopted by the governing body.

VERSION HISTORY

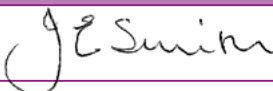
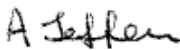
VERSION	DATE	DESCRIPTION
Initially adopted	March 2015	Adapted into Swansfield Park First School
This Review	27 May 2016	Adapted into Swansfield Park Primary School
Review	30 September 2018	
Review	October 2019	
This Review	October 2022	Minor date amendments



Headteachers:
Mrs J E Smith
 BSc PGCE,
Mrs A-M Grimes
 BA(Hons) PGCE



APPROVAL AND AUTHORISATION

	NAME	JOB TITLE	SIGNATURE	DATE
Approved	Jenny Smith	Head Teacher		October 2022
Approved	Angela Jefferies	Chair of Governors		October 2022
DATE OF NEXT REVIEW			Autumn 2025	

www.swansfield.northumberland.sch.uk