

NEWS LETTER



JANUARY 2018

Happy New Year

and welcome back
to the spring term at
Swansfield Park – we
hope you enjoyed the
festivities over Christmas
and the New Year.

Last term was certainly busy, the school now feels complete and we are looking forward to supporting our year 6 children through to the end of their primary education. Work with the High School is on-going to ensure a smooth transition.

The children always enjoy inviting family and friends into school and there will be several opportunities to join us as we will be holding both class assemblies and class lunches. Please check the diary section for the appropriate dates.

We look forward to seeing you at our events this term.

Best Wishes
Jenny Smith

Swansfield Park Primary School, The Avenue, Alnwick, Northumberland NE66 1UL



Choir

Choir have had a very busy but rewarding and enjoyable festive season. The grand tour for 2017 began with carol singing at Sainsbury's for the Hospice. We received some lovely feedback and this spurred us on our way to Summerhill residential home for our next stint.

On Tuesday 12th December, we braved the icy conditions to sing for the Elderberries and the Duchess at Alnwick Gardens. The Pavillion is such a lovely setting to sing in and the children brought joy and a good deal of Christmas cheer to the VIP lunch guests. It was very kind of the Duchess to come over and have a chat with us after our singing and she was very complimentary about our performance! She even wore her grey and purple dress for the occasion – who knew she was a Swansfield supporter?!

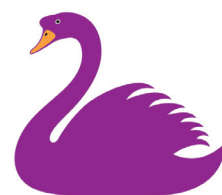
The oncology day unit at Alnwick invited us to sing for patients this year and of course we said yes.

We wanted to show our support and appreciation for this vital community service. I know that the children's singing meant an awful lot to those attending.

We were thoroughly honoured to be asked to sing at the wedding of Katie Allcorn and James Willoughby. We all enjoyed being a part of their special day.

In the final week of term, we toured many local residential homes. It's such a worthwhile experience for the children to meet the older members of our community and to see how much their performance is valued and looked forward to.

Well done choir, yet again you have served your school and your community brilliantly!



Swansfield Park
Primary School



Homework

Why we believe homework is important



At Swansfield Park Primary School, homework is believed to be an aspect of the learning process that should involve parents, teachers and children all working together in partnership.

SPPS Homework Policy 2017

Throughout the last academic year, several of our school governors have been working with stakeholders to review the systems and procedures in place for homework.

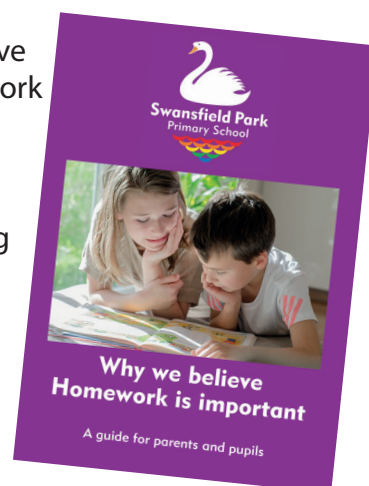
As part of their work they sent questionnaires to parents and pupils and held discussions with staff. The aim of their work was to ensure that the schools' expectations of homework were not only communicated effectively with parents, but that homework tasks were both consistent and progressive throughout the school.

As outlined in the March Newsletter, several immediate changes were made, these included:

- Weekly homework and spelling overviews being made available to parents of KS2 children on the class pages of the school website.
- A lunchtime homework club was set up

- Access to computers in the Hub was timetabled every lunchtime
- Maths activities were set as homework for KS1 children

In addition to all of the above, the governors have now produced a homework guidance booklet for parents and pupils. Not only does it contain useful tips for supporting children with their homework, there is also a clear overview of the school's expectations. A copy of this booklet will be sent home soon.



Family Learning Challenge

Three years ago the staff and the governors developed a very ambitious and forward thinking strategic plan. The results of this plan can be seen in our fabulous learning environment and the amazing opportunities enjoyed by our children.

We would appreciate your input into the next stage of our journey.

Over the course of this term we will be working on our new strategic plan which will shape our development until 2021.

We will be working with the children to find out what their aspirations are for the future of our

school and we would like to invite you as families to take part in this process too.



Further details will be included in the February newsletter.



Big Garden Birdwatch



This January we will be taking part in the big schools' birdwatch – why don't you spend an hour to take part in the
Big Garden Birdwatch
on the weekend of 27th - 29th January

Experience has taught us to expect severe weather during this half term therefore just as a reminder here are the notification procedures again.

Listen to

BBC Radio Newcastle 95.4fm

Go to the Northumberland County Council website
www.northumberland.gov.uk

Check your mobile phone
for our text messaging services

Occasionally it is necessary to send children home due to worsening weather conditions.

Ensure that your contact details are up to date
and inform the class teacher of any exceptional arrangements for the collection of your child

Make arrangements with a relative or close friend
to take care of your child until you are able to get home

Make sure that **your child is aware** of these arrangements

Check your mobile phone for our text messaging service.



Autumn Term Awards

The Sylvia Elliott
Progress Cup:
Joe Bottomer

Gold Certificates:

Isla Slater,
Harvey Robinson,
Lily Mallaburn,
Kye Mattison, Amelia
Black, Freya Flanighan,
Joel Isats, Noah
Milligan, Thomas
Harker, Leo Bottomer,
Leanne Gallagher,
Kate Burn *and*
Conor Carolan.

Stars of the Week:

Jessica Blower,
Riley Wightman,
Jayden Grieve,
Sophie Rowe,
Lilia Riddell,
Frances Molineux,
Jake Davidson and
Haidee Moore.



DIARY DATES

Communications

We use many different ways to communicate with parents.



Keep up to date through the school website at:
www.swansfield.northumberland.sch.uk



Email the office at:
admin@swansfield.northumberland.sch.uk



Check the text messages received from **Teachers2Parents** - please ensure that the office have an up to date mobile number for you.



Read the **Head Teacher's weekly blog** posted on the website and on Facebook every Monday for the very latest news.

Wed 17th January	Willow Class Friends & Family Lunch
Thurs 18th January	Rowan Class Assembly - 2.30pm
Mon 22nd January	SATs Meeting - 5pm
Wed 31st January	Larch Class Friends & Family Lunch
Thurs 1st February	Chestnut Class Assembly - 2.30pm
Tues 6th February	Safer Internet Day
Wed 7th February	Apple Class Friends & Family Lunch
Thurs 8th February	Plum Class Assembly - 2.30pm
Fri 9th February	School closes HALF TERM HOLIDAY
Mon 19th February	Teacher Training Day
Tues 20th February	School reopens
Wed 21st February	Sycamore Class Friends & Family Lunch
Tues 27th February	Parent Consultation Morning Years 3, 4, 5 & 6
Wed 28th February	Parent Consultation Afternoon Reception to Year 6
Thurs 1st March	Parent Consultation Morning Rec, Years 1 & 2
Thurs 1st March	World Book Day
Wed 7th March	Plum Class Friends & Family Lunch
Thurs 8th March	Sycamore Class Assembly - 2.30pm
Thurs 15th March	Ash Class Assembly - 2.30pm
Wed 21st March	Rowan Class Friends & Family Lunch
Fri 23rd March	Sports Relief
Wed 28th March	Easter Bingo
Thurs 29th March	Spring Assembly (by invitation only)
Thurs 29th March	School Closes: EASTER HOLIDAY

Friends and Family Lunches

Due to the short term and greater number of classes, it is not possible to offer each class a friends and family lunch this term. Therefore we are spreading these out over the remaining two terms.