

NEWSLETTER



Swansfield Park Primary School, The Avenue, Alnwick, Northumberland NE66 1UL

www.facebook.com/swansfieldpark



NOVEMBER 2018

I hope that you have enjoyed the October half term and have been able to spend some quality family time together with your children.

We rounded off a busy half term with our **Harvest Festival**, which was really well supported - **thank you**. The **Alnwick Foodbank** were extremely grateful for your donations and our guests at the Harvest lunch were very impressed by the food and the service - **well done to our lunchtime crew: Zoe, Sophie, Ellie R, Ellie S, Gaby, Chloe, Elise and Aimee**.



At Swansfield we are always striving to deliver the best possible education for our children and we appreciate all the support that the children get from home. We want to find out your thoughts about parental engagement.

- How well do we inform you about your child's learning?
- Do you find it easy to attend meetings?
- Which way is it best for us to communicate with you?

We need to find out the answers to these questions and a few more so that we can get our offer right and support you well. Please can you complete the questionnaire when you are in school next week.

We have been very impressed with the creativity of our family learning projects.

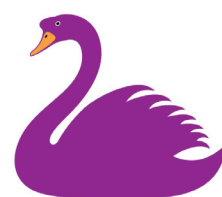
As usual we have had a wonderful variety of responses including several 3D pieces, poems, posters and even photographic evidence of families taking part in beach cleans
– **well done!**

All those who entered will have a trip to **Barter Books** on Monday to choose a prize. We thought that a second hand book would be in keeping with the conservation theme. The work will be exhibited in the display cabinet situated in the Studio – please take a look when you're in for your mentoring meeting next week.

We look forward to seeing you at our events this term.

Best Wishes

Jenny Smith



Swansfield Park
Primary School



We are the Champions!

MIA HATELY AND MIA HOWARTH REPORT...

Ten girls from year 6 won the area football tournament at Longhoughton in October and will play in the Northumberland finals to be held at Cramlington in June. All the girls played brilliantly. The goalkeeping and defence were great and kept a clean sheet while the attackers were amazing. Some games were tough but they worked together and won every game but one, which they drew against the dreaded Berwick Pandas.

All the girls; **Mia, Mia, Sarah, Isla, Grace, Lola, Lola, Emilie, Tess** and **Erin** should be so proud of themselves as they adapted really well to all the changes especially considering that some of them hadn't played competitive football before.



Celebrating more Accolades!

Hard work is always worth it when you get the acknowledgement you deserve so it is really important to say a big well done to the children and several members of staff who have gained national awards this term.

Mrs Makepeace has led us to the **Gold Arts Mark Award** and the green fingers of **Mrs Hammond, Mrs Straughan** and **Mrs Vicky** (to name just a few) helped us to win the **overall school's award** in the **Northumbria in Bloom** competition.



A big congratulations to **Mrs Rutherford** and the Eco-Council on being awarded the **Eco-Schools Bronze Award**.

In the spring term of last year, **two children from each Key Stage 2 class** were elected to represent their class at the Eco-Council.

The council came up with lots of brilliant ideas on how Swansfield can be more eco-friendly. They conducted a litter survey, learnt all about recycling and they discussed how the school environment could be improved. During the weekly meetings, the council also produced an environmental review of the school along with an action plan.

This year's Eco-Council has already started the task of achieving the **Eco-Schools Silver Award** by taking part in **'Switch Off Fortnight'** during November. They will be keeping check on how much electricity the school is using! In the future, we hope to achieve the **Eco-Schools Green Flag award**.



Well done everyone – I think we are going to need a bigger trophy cabinet!



Christmas Lights Switch On Friday 23rd November at 7pm

Come along and join us for this community event as we will be busy making decorations for the Christmas tree in the next few weeks. Staff will meet you next to the tree from 6.15pm to help decorate it.

Please remember that all children must be accompanied by an adult.

World War 1 Remembered

Throughout school we have been working on projects to mark the centenary of the armistice in 1918.

We welcomed **Toni, Lucy, Hannah** and **Sophie** from **The Alnwick Garden** who helped us to make poppies for the installation beside the Grand Cascade.

Children in Key Stage 2 have taken part in a letter writing competition which has been organised by the **Western Front Association** and **Larch** and **Rowan** classes have worked with **Ira Lightman** to learn about **Wilfrid Gibson**, Northumberland's only war poet.



Attendance

The governors are reviewing the attendance policy and procedures.

The school target for 2018 -19 is 96%.

Children achieving 96% will be given **green** on their mentoring check, those with 92 – 95.9% will be **amber** and below 92% is **red**.

Any child who has had an unauthorised absence (usually due to term time holidays) will be given **red**.

The Educational Welfare Officer checks the registers regularly and parents will be notified in writing if there are concerns about their child's attendance and offered support.

Christmas Concerts

This year the Infant Nativity is a reprise of **"Little Angel gets her wings"** and the children in years 3 and 4 will be performing a take on one of our favourite pantomimes **"A lad in trouble"**.

Admission will be by ticket only. 170 tickets will be available for each performance at a cost of £1 each.

Every family in school will initially be allocated two tickets (additional tickets will be allocated if you have children in more than one performance). Please indicate which performances you require tickets for on the reply form attached. A list will be kept in the office of anyone wishing to have extra tickets and these will be issued on a first come first served basis.

Please consider the children performing and sit quietly during the concerts. It is a lot to ask of a younger sibling to sit quietly through a concert; therefore we are inviting parents with pre-school children to attend the dress rehearsal.

Keeping the fire exits clear and enabling the children to get in and out of the hall is imperative, please find a seat rather than stand in the aisles.



The school will close on Friday 21st December and re-open on Monday 7th January 2019.

Stars of the Week

Well done to our stars of the week for last half term. These children were chosen for working towards the 5 R's: being

responsible
reflective
ready
resourceful
and
resilient.

They were: **Aiden Brown, Lilly Ha, Aaron Dodd, Nyo Tompkins, Freya Flanighan, Jack Frater and Taylor Dodd.**

Book Fair

Monday 12th November - Friday 16th November

We are holding a Scholastic Book Fair to raise money for school funds, it will be open daily for half an hour before and after school in the Hub.

Come along and buy some special Christmas presents.

The Little Maid Who Danced To Every Mood Tuesday 4th December

Northumberland Theatre Company's annual Christmas performance for the children.



Communications

We use many different ways to communicate with parents.



Keep up to date through the school website at:
www.swansfield.northumberland.sch.uk



Email the office at:
admin@swansfield.northumberland.sch.uk



Check the text messages received from **Teachers2Parents**
- please ensure that the office have an up to date mobile number for you.

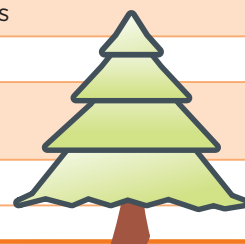


Read the **Head Teacher's weekly blog** posted on the website and on Facebook every Monday for the very latest news.



DIARY DATES

Wednesday 7th November	Chestnut Class Family Lunch 11.50am
Tuesday 13th November	Junior Mentoring Meetings 8.30 - 12.noon
Wednesday 14th November	Infant and Junior Mentoring Meetings 1.00 - 6.30pm
Wednesday 14th November	Reception Parent Consultations 1.00 - 6.30pm
Thursday 15th November	Infant Mentoring Meetings 8.30 - 12.noon
Wednesday 21st November	Willow Class Family Lunch 11.50am
Tuesday 4th December	NTC Performance "The Little Maid Who Danced To Every Mood"
Wednesday 5th December	Beech Class Family Lunch 11.50am
Tuesday 11th December	Infant Christmas Concert - 1.45pm
Wednesday 12th December	Infant Christmas Concert - 10am
Wednesday 12th December	Years 3 & 4 Christmas Concert - 1.45pm
Thursday 13th December	Years 3 & 4 Christmas Concert - 6pm
Wednesday 19th December	Christmas Lunch and Parties
Thursday 20st December	Christingle 1:45pm
Friday 21st December	School Closes CHRISTMAS HOLIDAY
Monday 7th January	School reopens





Christingle

Everyone is welcome to join us for this wonderful celebration of Christmas which will be held at St Paul's Church and led by the year 5 and 6 children.

**THURSDAY
20TH
DECEMBER
AT 1:45PM**

Christmas Lunch & Party

Wednesday 19th December

Christmas lunch will be followed by an afternoon of party games in the classrooms. Please send children into school in their **party clothes** to enjoy a day of festive fun. Children who attend nursery will have their party during the normal nursery session.

The **Friends of Swansfield Park** pay for Christmas lunch. If your child usually has a packed lunch but would like a Christmas dinner, please order it at the office.

Christmas Jumper Day

**Friday
21st December**

Pay £1 to wear your **Christmas Jumper** and support **Save the Children**



Save the Children