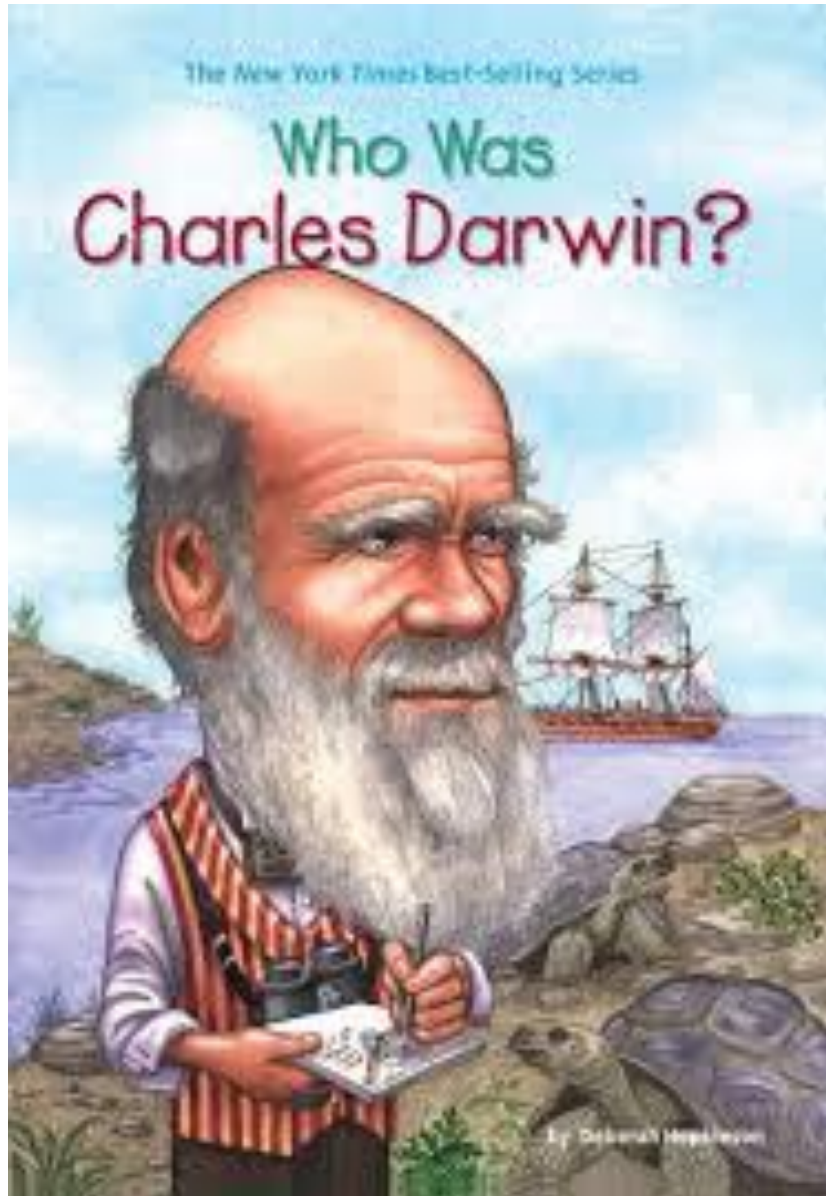




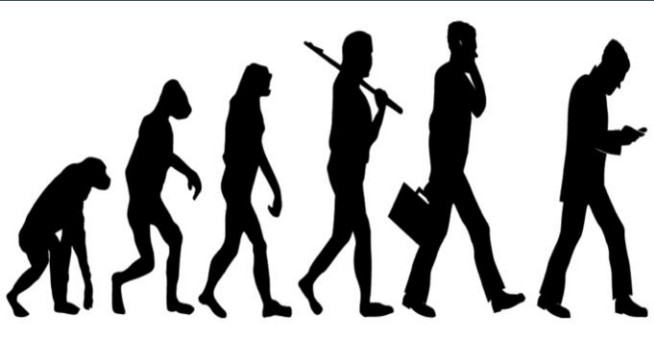
EVOLUTION AND INHERITANCE

BY LILY



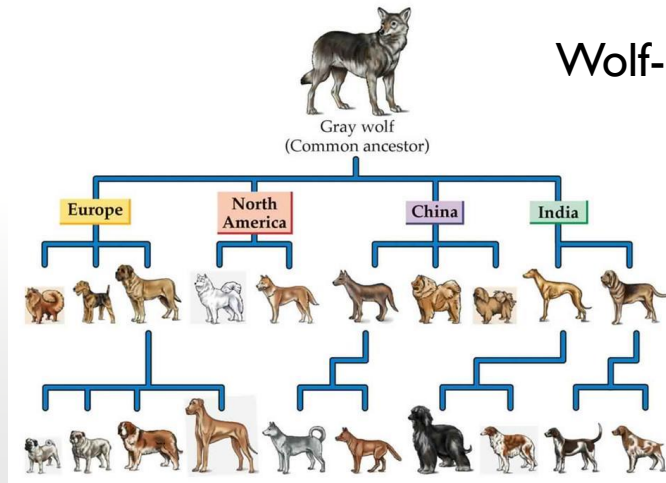
- Charles Darwin was born on 12th February 1809 and died on 19th April 1882.
- He did not invent anything but he developed a theory about evolution.
- His theory had far reaching effects on science and the way we understand changes in living things.

WHAT IS EVOLUTION ?

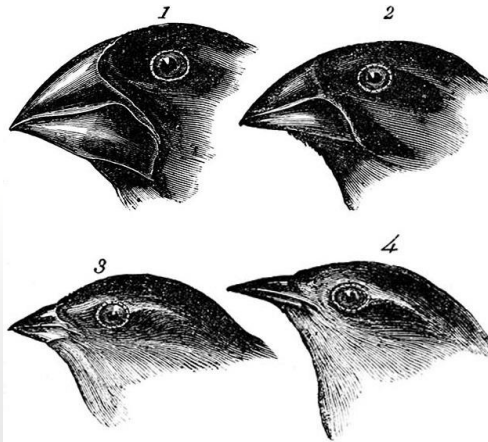


- Evolution, also known as development, is how species change their characteristics over several generations.

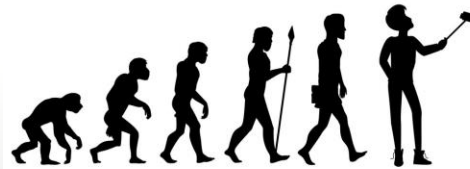
Wolf-Dog



Old birds to New birds



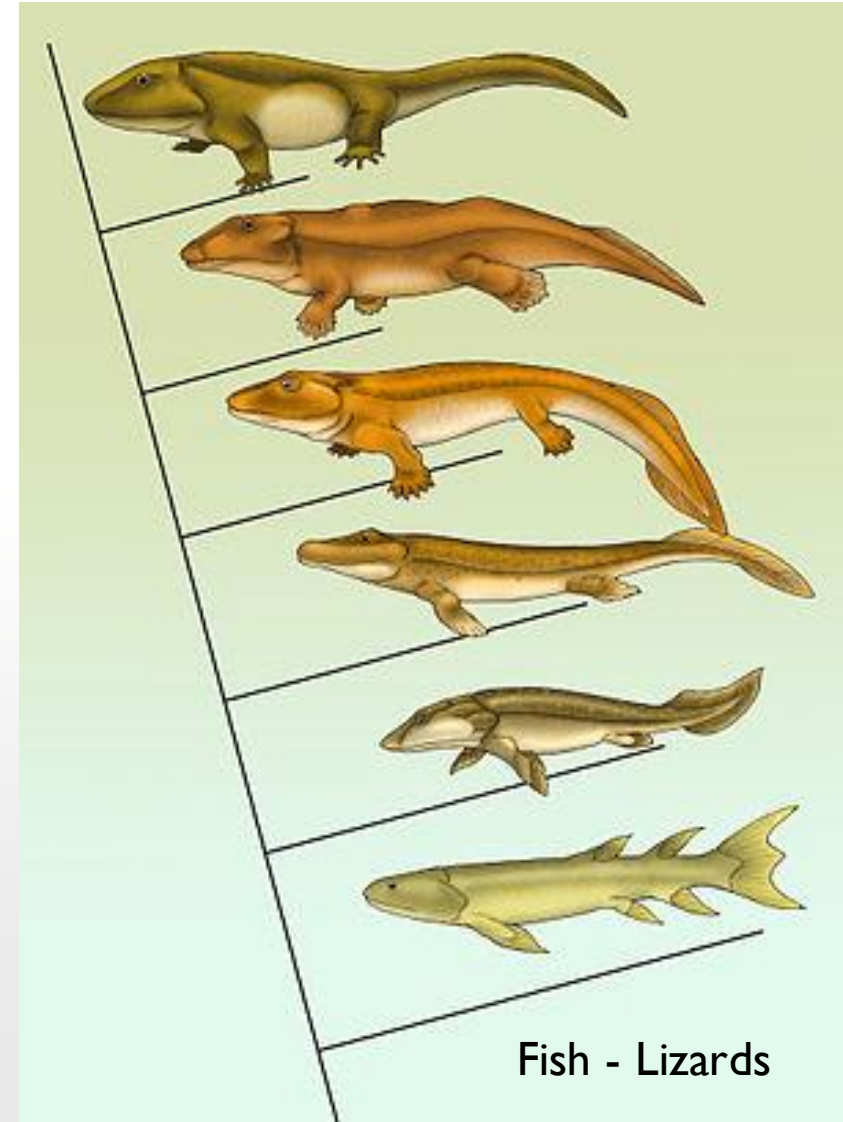
Apes-humans



VectorStock®

VectorStock.com/6516218

Fish - Lizards



INHERITANCE

Inheritance is when features are passed on to the next generation.

Over a long period of time, species inherit the features of the generations before them and they gradually evolve.

NATURAL SELECTION

- Evolution relies on the process of natural selection.
- Natural selection is nature's way of selecting the strongest, fittest or most intelligent of living creatures.

...generations later...

