

Swansfield Park Primary School

NEWSLETTER

Swansfield Park Primary School, The Avenue, Alnwick, Northumberland NE66 1UL

www.facebook.com/swansfieldpark



SEPTEMBER 2020

Welcome back to the start of a new academic year at Swansfield Park Primary School.

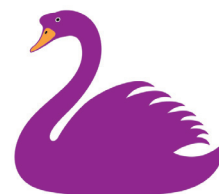
Having taught for over three decades the last academic year will never be forgotten. It is difficult to predict the resolution to this situation or the impact that the last six months will have on our children. However, we can take heart from the way that children have returned to school with their resilience and positive attitude. I also have to acknowledge the fantastic staff that we have who, as usual continue to go above and beyond the call of duty.

We have a lot to be grateful for – we have returned to school **safe and well**, we have a **busy, vibrant school** which continues to develop and move forward even in these times, and, most importantly, **we have a supportive school community** where everyone is kind and looks after each other.

Over the holiday we **transformed the toilets** in early years as well as the boys' toilets next to Ash and Willow classes. We plan to refurbish the girls' toilets between

Chestnut and Oak classes during the October half term holiday. *I don't usually post photos of toilets but these need to be shared!*

We have invested in several state-of-the-art interactive screens which are livening up the learning. These screens will be well used as we introduce the children to **google classroom** in case of further lockdowns.



Swansfield Park
Primary School



Our next big project is to landscape the **Key Stage 1 garden** alongside The Cut. We have been working with **Dru Allan** who has produced the most amazing plans - just look at these virtual images!



In the classroom we have been focusing on emotional well-being by giving the children time to share their thoughts and begin to feel secure again within the school environment.

We are also finding out where the learning gaps are and amending our planning or organising targeted interventions which will initially be led by **Miss Whitlow** and **Mrs O'Connell** until both ladies go on maternity leave in October.

Mrs Snowden is supporting our Year 2 children, ensuring that they have a secure knowledge of phonics.




Would you like to become more involved in the running of our school? Why not become a parent governor?

We currently have a vacancy.

Governors play a very important role within our school, so if you are interested and would like further details, please speak to me.





Our older children have been taking part in a daily mile, some around the school field and others in Swansfield Park. This not only gives them more exercise but the opportunity to chat with their friends – social time is so important at the moment.

By continuing to work together, we can help our children to get their learning back on track and achieve outstanding results. We will be continuing to use the class pages on the school website to communicate with you and share homework. All children will read in school and we are considering which online reading schemes to purchase, this will avoid the need for book bags and ultimately be more hygienic.

Most importantly please get your child to school every day on time (unless they are unwell), rested and raring to go. If you need any support, please ask either your child's class teacher or make an appointment at the office to see me.

Best Wishes
Jenny Smith





**Congratulations to Kobi Horne Smith and Lily Hamilton
our new Head Boy and Head Girl.**

Each Castle has a male and female Castle Captain. These are:

ALNWICK

Scarlet Lucas and Emily Charlton

WARKWORTH

Jacob Jones and Zara Hately

BAMBURGH

Patrick Tilley and Thea Harris

DUNSTANBURGH

Conor Grey and Florence Smith

**We are sure that these young people will be superb ambassadors for our school
and act as excellent role models for others to aspire to.**



Virtual Harvest Festival and Family Learning

Wednesday 14th October.

Due to social distancing we won't be able to celebrate our harvest festival in the usual way this year.

However, as this is a time of significant hardship for many families, the Alnwick Food Bank will be grateful for donations. We would like to give non-perishable food items such as packets, cans, cartons and jars. Please bring your donations to school on Wednesday 14th October for our harvest collection.



For our family learning this term we would like you to contribute to our Harvest Gallery which will include a photo of the harvest display made from all your gifts.

Please send photos of your harvest pictures, harvest poems, combine harvester models (red of course!) or fruit and veg sculptures, you can even record your favourite harvest songs!

Please have your contributions into school by **Monday 12th October** so we can include all the work in our **virtual harvest festival**.



New Faces around school

Welcome to our new staff and governor, we hope that they will feel welcomed within our school community and make a valuable contribution to school life.

Mrs Maja Brodowska has joined the support staff and is helping in school during lunchtime.

Mr James Carr is teaching alongside Mrs Amy Smith in Maple class

Mrs Jessica McArdle is the new Contagious Youth Worker in Alnwick and as such our new co-opted governor.

Nut Free School

We have children in school with severe nut and sesame allergies. These allergies are serious and cause a rapid and life threatening reaction known as anaphylaxis.

Please be mindful of this if you are preparing packed lunches for your child and please avoid including any nut products.

Our school kitchen doesn't use nuts or sesame in the preparation of meals.



Dog Days

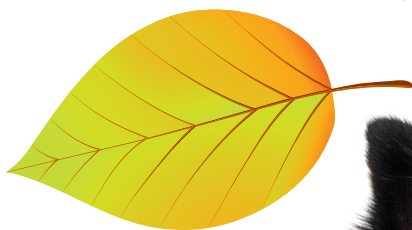
There has been much research into the positive benefits of having pets in school; indeed we have our fish tank in the quiet area which is very relaxing. Pets have been shown to have many benefits such as improvements in behaviour, attendance and social development. Pets can be used as a reward, for support and even to read to.

We are contemplating introducing other animals to school and we have even thought about a school dog. We feel that the first step is to introduce Dog Days. Several members of staff have some very indulged canine friends

at home who would be only too willing to come into school especially if treats are involved.

The dogs will be under adult supervision and be kept on a lead at all times; children will wash their hands after touching the dog. We appreciate that some children may be frightened of dogs however spending time with a family pet would hopefully overcome this fear.

Please get in touch with me if you have any queries or if your child has any allergies to pet hair / fur so that we can take appropriate precautions.





Healthy School

As we work to maintain our Healthy School status please help us to keep our children healthy and safe by...

- **Encouraging children to drink water.** Please do not put juice or flavoured water into water bottles.
- **Remembering to keep your child at home for 48 hours following sickness.**
- **Removing jewellery (except watches) in school.** Children will be asked to remove earrings and nail varnish for health and safety reasons.
- **Keeping dogs off the school site.** Many children are frightened and dog fouling is a health risk.
- **Walking to school or parking responsibly in the playground car park or on Prudhoe Street.** Please remember that the staff car park is strictly out of bounds at all times.
- **Respecting our neighbours.** Please don't access the school site via the Police Station Houses.
- **Keeping the gates closed to ensure that the site is safe at all times.**
- **Remembering that children will be learning in the outdoor environment -** so please ensure that they have warm and waterproof clothing.
- **Supervising your children in the yard before school** and remember that football is not allowed at this time of day.
- **Encouraging your child to eat school dinners or providing a healthy packed lunch in line with current nutritional guidelines.**

Please stay at home if you have any Coronavirus symptoms (dry cough, fever, loss of taste or smell), let school know and get tested.

Please do not enter the school building if you need help go to the school office through the main entrance.

Please do not use mobile phones on the school site.

Remember that children must not use the climbing equipment.

Communications

We use many different ways to communicate with parents.



Keep up to date through the school website at:
www.swansfield.northumberland.sch.uk



Email the office at:
admin@swansfield.northumberland.sch.uk



Check the text messages received from **Teachers2Parents** - please ensure that the office have an up to date mobile number for you.



Read the **Head Teacher's weekly blog** posted on the website and on Facebook every Monday for the very latest news.



Swansfield Park
Primary School

SWANSFIELD PARK
NEWSLETTER

SEPTEMBER 2020

DIARY DATES

Due to COVID restrictions we are sadly unable to welcome parents into school to share in family lunches, class assemblies or Harvest and Christmas celebrations.

We are not able to arrange any residential visits and are not currently planning educational visits.

If and when restrictions ease, we will review this situation.

To liven up the term we are hoping to take part in as many relevant special events or themed weeks, we have included these in the calendar below.



Friday 25th September
European Day of Languages

Thursday 1st October
National Poetry Day

Week beginning 5th October
World Space Week

Thursday 8th October
Stem Fest in Space

Thursday 22nd October
School closes HALF TERM HOLIDAY

Monday 2nd November
School reopens

Week beginning 2nd November
Parliament Week

Week beginning 16th November
Anti-bullying Week

Monday 16th November
Odd Socks Day

Wednesday 16th December
Christmas Lunch and Parties

Friday 18th December
Christmas Jumper Day, School Closes
CHRISTMAS HOLIDAY

Monday 4th January
School reopens

